



GBS Selection Policy

Olympic Competitions 2023/2024
Olympic Squad Selection 2024/2025

Contents

Definitions	3
1. Objectives and Approach	6
2. The Purpose of the Selection Policy	6
3. The Selection Panel	7
4. Eligibility	8
5. Selection Process	9
6. Late Athlete Replacement	10
7. Appeal Process	11
Schedule A: APA Nomination Process	14
Schedule B: Alpine Skiing Minimum Selection Criteria	15
Schedule C: Cross Country Skiing Minimum Selection Criteria	23
Schedule D: Freestyle - Aerials Minimum Selection Criteria	33
Schedule E: Freestyle - Moguls Minimum Selection Criteria	34
Schedule F: Freestyle – Ski Cross Minimum Selection Criteria	39
Schedule G: Freestyle - Ski Halfpipe Minimum Selection Criteria	45
Schedule H: Freestyle - Ski Slopestyle & Big Air Minimum Selection Criteria	48
Schedule J: Nordic - Ski Jumping Minimum Selection Criteria	60
Schedule K: Snowboard – Alpine Snowboard Minimum Selection Criteria	62
Schedule L: Snowboard – Snowboard Cross Minimum Selection Criteria	65
Schedule M: Snowboard - Halfpipe Minimum Selection Criteria	71
Schedule N: Snowboard - Slopestyle & Big Air Minimum Selection Criteria	74
Schedule O: Speed Ski Minimum Selection Criteria	81
Schedule P: Telemark Minimum Selection Criteria	82
Schedule Q: Appeals Process Flowchart	85

Definitions

“ADRV”	means Anti-Doping Rule Violation;
“APA”	means Athlete Performance Award;
“APA Nominations Committee”	means the group of individuals responsible for making nominations to UK Sport for the allocation of APAs;
“Appeal”	means an appeal against a Selection decision under the Policy;
“Appeal Panel”	means the panel which addresses Appeals once they go beyond the capacity of the Selection Panel;
“Appeal Process”	means the process for addressing Appeals within the Policy;
“Appellant”	means any athlete or Authorised Representative who makes an Appeal against a Selection decision;
“Authorised Representative”	means any party who is authorised to accompany the Appellant at certain stages of the procedures outlined within the Policy;
“BASS”	means British Alpine Seeding System;
“BNDS”	means British Nordic Development Squad;
“BOA”	means the British Olympic Association, the National Olympic Committee for the United Kingdom;
“CEO”	means the Chief Executive of GBS;
“Chairman”	means the Chairman of GBS;
“Chair of the Appeal Panel”	means the individual whose role is to have leadership responsibilities over the Appeal Panel;
“Competition”	means an Event or series of Events conducted over one or more days including a National or International Competition;
“Discipline Chair”	means the Chair of the Discipline Committee;
“Discipline Committee”	means a committee established to manage a Discipline, in accordance with Article 8 of the GB Snowsport Articles of Association;
“Event”	means a single race or contest;

“EYOWF”	means the European Youth Olympic Winter Festival;
“EYOWF Team Leader”	means the GBS representative responsible for the Team selected to compete at the EYOWF;
“FIS”	means the International Ski Federation;
“GBR”	means the United Kingdom of Great Britain and Northern Ireland;
“GBS”	means GB Snowsport Ltd.;
“GBS Athlete”	means an athlete who is part of a GBS Team/GBS Squad;
“GBS CASC”	means the GBS Children’s Alpine Selection Committee;
“GBS Head Coach”	means the person responsible for coaching delivery within GBS programmes;
“GBS Head of Talent”	means the individual responsible for the performance pathway strategy for GBS;
“GBS Medical Adviser”	means the duly appointed lead doctor responsible for medical issues of a GBS Squad or GBS Team;
“GBS TSC”	means the GBS Telemark Selection Committee;
“GBS Website”	means the official GBS website; https://www.gbsnowsport.com/ ;
“Home Nations”	means England, Scotland, Wales, and Northern Ireland;
“IOC”	means International Olympic Committee;
“Notice of Appeal”	means the notice given by the Appellant to initiate Appeal proceedings;
“OPA”	means the Alpen Cup;
“OQS”	means the Olympic Qualifying Standards;
“Outstanding Financial Obligations”	means overdue invoices or not making the payments on an agreed payment plan
“Performance Profile”	means the profiles of GBS Athletes demonstrating their current performance level and trajectory towards winning medals at World Championship and Olympic level;
“Schedules”	means the Appendix detailing Selection

	Criteria for Squads and Teams for each GBS discipline;
“Second Appeal Notice”	means the notice received by the Appeal Panel once the Appeal Process has advanced beyond the Selection Panel’s deliberations;
“Selection”	means the process of selecting athletes to represent GBR to GBS Squads or GBS Teams;
“Selection Panel”	means the GBS Selection Panel; a standing committee of the GBS Board responsible, inter alia, for the Selection or nomination of GBS Squads or GBS Teams;
“Squad”	means a set of Athletes selected to represent GBS for the competitive season;
“Team”	means a set of Athletes selected to represent GBS at a major Event;
“WCP”	means World Class Programme.

1. Objectives and Approach

- 1.1. This document outlines the Selection Policy (the “Policy”) which GB Snowsport (“GBS”) will follow when selecting athletes to represent the United Kingdom of Great Britain and Northern Ireland (hereinafter referred to as ‘GBR’) and relates to all snowsport disciplines managed by GBS.
- 1.2. The Policy sets out the overarching primary criteria for Selection (“Selection”) to represent GBR and must be read in conjunction with the Schedules (the “Schedules”) to this document. Each Schedule represents a specific Policy relating to a specific discipline.
- 1.3. The Schedules provide further detailed information to assist athletes and coaches in understanding relevant criteria likely to be used by the GBS Selection Panel (the “Selection Panel”) for that discipline. When required, additional Schedules may be created and published for major Competitions, examples being the Olympic Qualifying Standards or new qualifying standards published by the International Ski Federation (“FIS”).
- 1.4. The Policy also describes an Appeal Process. Any Appeal against a decision of the Selection Panel must follow strict procedures laid down in the Appeal Process (the “Appeal Process”). Adherence to the process ensures that all Appellants are treated equally. There is a financial charge for making an Appeal to discourage frivolous Appeals.
- 1.5. The Policy and/or the Selection Criteria contained herein may be amended from time to time by GBS, including in particular in the event that COVID-19 materially impacts any matters related to the Policy, including in respect of qualification events or timelines.

2. The Purpose of the Selection Policy

- 2.1. The purpose of the Selection Policy is to:
 - 2.1.1. maximise GBS’s goal of increasing medal outcomes at an Olympic Games or World Championships;
 - 2.1.2. provide opportunities for the long-term development of athletes who are, in the opinion of the Selection Panel, capable of being podium competitive at international Events; and
 - 2.1.3. provide the basis for selecting athletes for specific Squads or Competitions, including Junior Squads, when representing GBR.
- 2.2. Policies which relate to specific championships for the current season (1st July to 30th June each year), will be published no later than 30th September, e.g. 30th September 2023 for the 2023/2024 season.

- 2.3. Policies which relate to Squad Selection for the following season will be published no later than 30th September of the preceding season (other than Freestyle Ski and Snowboard Big Air, Slopestyle and Halfpipe, when it will be 31st January to allow for recent FIS rule changes). Selections will be made by 1st July (or nearest date for when the new season FIS point list is published).
- 2.4. Policies which relate to the award of FIS Licences will be published by the relevant Discipline Committee of the GBS Board (“Discipline Committee”).
- 2.5. Each Policy and Schedule to the Policy will be versioned and dated such that no earlier policies may be used or deemed relevant. Each current Policy will be available on the GBS Website.

3. The Selection Panel

- 3.1. The Selection Panel, which is responsible for the implementation of the Policy, will be chaired by an individual nominated by the GBS Board.
- 3.2. The Selection Panel will consist of the:
 - Chair nominated by the GBS Board;
 - GBS Head Coach;
 - Independent Legal Adviser (as nominated by the GBS Nominations Committee);
 - Chair of the Relevant Discipline Committee (or nominated representative); and
 - Relevant GBS Head Coach for the Discipline.
- 3.3. The Selection Panel is therefore composed of 5 voting members, and shall be quorate if 3 members are present, one of whom must be the Independent Legal Adviser (unless conflicted) and another being the Chair nominated by the board or the GBS Head Coach.
- 3.4. Discipline Committees should meet to discuss Selections, following which the GBS Head Coach for the specific discipline must make written recommendations to the Selection Panel. In addition to the written recommendation, additional verbal communications from the Selection Panel or invitees can be accepted during the Selection meeting. Any additional comments must be clearly minuted.
- 3.5. Selections will be made without bias or discrimination, and, as such, any conflicts, real or perceived, must be declared and recorded at the start of the meeting. The existence of a disclosed conflict will not preclude a Selection Panel member, or attendee, from participating in deliberations. Depending on the nature of the conflict a Selection Panel member may have to abstain from voting if a vote is required.
- 3.6. The Selection Panel has total discretion to make Selections appropriate to the competition, championship, series, or Squad but in accordance with the purpose of the Policy stated above. It will use, in conjunction with its own assessment, the most recent published discipline specific Selection criteria as a guide to their deliberations and conclusions. Any Appeal made against a decision of the Selection Panel cannot challenge the exercise of discretion unless the Appeal can demonstrate that the

discretion has not been exercised in a reasonable manner and that such discretion was exercised in such a way as to be prejudicial to the Appellant.

- 3.7. Further to 3.6, the Selection Panel will not give any preference to athletes who work or train, or who are in any other way associated with partners of, or entities associated with, GB Snowsport, and all Selections will be made in accordance with the rules and procedures laid down in the Policy.
- 3.8. It should be noted that nominations for Athlete Personal Awards and World Class Programme (“WCP”) membership are dealt with by a committee of the Selection Panel, the Athlete Performance Award (“APA”) Nominations Committee. Please refer to the Olympic APA Selection Policy for further details on this process.
- 3.9. The APA Nominations Committee will consist of the:
 - Chair nominated by the GBS Board;
 - GBS Head Coach;
 - Paralympic Programme Manager (Para Nominations);
 - Olympic Programme Manager (Olympic Nominations);
 - Chairman of GBS;
 - CEO of GBS; and
 - UK Sport Representative.

4. Eligibility

- 4.1. No athlete may be selected under or pursuant to the Policy unless they have satisfied the basic eligibility criteria.
- 4.2. The athlete must:
 - 4.2.1. hold a British Passport and be eligible under FIS rules to compete for GBR;
 - 4.2.2. hold a FIS Licence issued by GBR (awarded by the relevant Discipline Committee);
 - 4.2.3. be WADA compliant and not be banned or suspended from competition due to an Anti-Doping Rule violation (ADRV) ruling or Investigation;
 - 4.2.4. not be serving a suspension for any other disciplinary offence; and
 - 4.2.5. with the exception of Selection to a Squad, not be considered, in the reasonable opinion of a GBS Medical Adviser, to be physically or mentally unfit to compete.
 - 4.2.6. not have any outstanding financial obligations to GBS
- 4.3. Assuming an athlete meets the above conditions, the athlete is eligible for Selection to a Squad. An athlete cannot be selected for any Senior Event, Senior Championship, or WCP unless that athlete has been selected for the Squad for their age group and/or discipline. In exceptional circumstances, Selection into a Squad can occur at any time – however Selection will generally take place at the end of the European Winter

Season in April, May or June of each year.

- 4.4. Any Selection does not entitle an athlete to receive funding (in particular, WCP funding).

5. Selection Process

- 5.1. The Selection Panel is responsible for Selection of all athletes for the Olympic Games and World Championships Teams, for World Cup, Europa Cup, Development and FIS Squads, and for Youth Olympic Games, European Youth Olympic Winter Festival and Junior World Championships Teams.
- 5.2. When selecting athletes for the Olympic Games, World Championships, Youth Olympic Events and Junior World Championships Teams, the Selection Panel will not select replacement athletes at the initial Selection Meeting. Should it become necessary to select replacement athletes, such selections will be made in accordance with the procedure laid down in Clause 6.
- 5.3. When selecting athletes for Under 16 and Under 14 Competitions or Events, the Selection Panel will not select replacement athletes at the initial Selection Meeting. Should it become necessary to select replacement athletes, such selections will be made in accordance with the procedure laid down in Clause 6.
- 5.4. For Cross Country Performance Squad and Junior Squad Selections, British Nordic Development Squad (“BNDS”) Committee will nominate to the Selection Panel for ratification.
- 5.5. For Speed Ski Squad Selections, the relevant Discipline Committee will nominate to the Selection Panel for ratification.
- 5.6. For Telemark Squad Selections, the GBS Telemark Selection Committee (GBS TSC) will nominate to the Selection Panel. The GBS TSC will be made up of the Chairman of the GBS Telemark Discipline Committee, GBS Head Coach, Team Captain (non-voting member), GBS Telemark Discipline Committee Member, GBS Telemark Head Coach, and co-opted member(s) (at the discretion of the GBS TSC).
- 5.7. The Discipline Committees Chairs are responsible for the publication of specific Selection criteria relevant to their particular sport, other than the Olympic Games or World Championships. For Olympic Games and World Championships, the Selection Panel will meet with Discipline Committees to define and design specific Selection criteria.
- 5.8. The criteria outlined in the Schedules are the main input into the Selection decision making process.
- 5.9. Following Selection Panel meetings, athletes will be notified of their Selection/non-Selection by GBS and Selections will be published on the GBS Website once the Appeals window has closed.

6. Late Athlete Replacement

- 6.1. In the event that an athlete selected for the Olympic Games and World Championships Teams or for Youth Olympic Games, European Olympic Winter Festival and Junior World Championships Teams, is unable to participate in the Event due to medical conditions [or other exceptional reasons], the Selection Panel, after consultation with the athlete and any appropriate medical experts [approved by GBS] (where deemed appropriate), will reconvene in order to select a replacement athlete in accordance with this clause.
- 6.2. In the event that an athlete selected for an Under 16 or Under 14 Competition or Event, is unable to participate in the Event due to medical conditions [or other exceptional reasons], the Selection Panel, after consultation with the athlete and any appropriate medical experts [approved by GBS](where deemed appropriate), will reconvene in order to select a replacement athlete in accordance with this clause.
- 6.3. When selecting a replacement athlete, the Selection Panel will consider results obtained in Competitions during the current season with greater emphasis on more recent results in order to select on current form. The Selection Panel has total discretion to make selections appropriate to the Event but in accordance with the purpose of the Policy.
- 6.4. Where a replacement athlete is required for the Olympic Games, Youth Olympic Games or European Youth Olympic Winter Games, a late athlete replacement may be made up to 7 days before the first Team Captains' Meeting for the relevant [discipline].
- 6.5. Where a replacement athlete is required for the World Championships or Junior World Championships Teams, a late athlete replacement may be made up to 4 days before the first Team Captains' Meeting for the relevant [discipline].
- 6.6. Where a replacement athlete is required for an Under 16 or Under 14 Competition or Event, a late athlete replacement may be made up to 48 hours before the first Team Captains' Meeting for the relevant [discipline].
- 6.7. A Late Athlete Replacement is only possible if the replacement athlete meets the eligibility conditions laid down in the Policy.
- 6.8. Following Selection Panel meetings, athletes will be notified of their Selection/non-Selection by GBS [and Selections will be published on the GBS Website once the Appeals window has closed].
- 6.9. If an athlete wishes to appeal a decision made pursuant to this clause, then Clause 7 of the Policy will apply except that the Notice of Appeal must be sent within 24 hours of the notification of Selection/non-Selection for the Competition or Event.
- 6.10. If a replacement athlete is required for the World Championships or Junior World Championships Teams after the time frames laid down in Clause 6.5, the Selection Panel has absolute discretion to select a replacement athlete for the relevant Event from the athletes already selected to the Team. In such circumstances, it will not be possible for athletes to appeal this decision.

7. Appeal Process

- 7.1. Any Appeal against a decision of the Selection Panel must follow strict procedures. The following procedure is applicable to all disciplines in respect of Selections.
- 7.2. Any Appeal against Selection for an Olympic Games must follow the Appeal Process laid down in the Olympic Games Selection Policy.

Grounds of Appeal

- 7.3. An athlete, or their Authorised Representative, (“the Appellant”), may make an Appeal against a Selection decision only on one or more of the following grounds:
 - 7.3.1. there has been a failure to apply the Criteria contained in the relevant Schedule correctly;
 - 7.3.2. the Selection Panel has failed to follow its procedures properly; and/or
 - 7.3.3. the Selection Panel’s discretion has not been exercised in a reasonable manner and that such discretion was exercised in such a way as to be prejudicial to the Appellant.

The Process

- 7.4. In the first instance an Appeal is made to the Selection Panel, who will consider the Appeal and respond, either:
 - a) agreeing with the Appellant and changing the original decision; or
 - b) rejecting the Appellant’s Appeal and explaining its reasons for the decision.
- 7.5. If an Appellant is not satisfied with the outcome of the Selection Panel’s further deliberations, then the Appellant may make a further Appeal (“the Second Appeal Notice”) to a different panel, the Appeal Panel (“the Appeal Panel”), based on the same grounds of Appeal and Appeal Notice.
- 7.6. Outcomes available to the Appeal Panel are:
 - 7.6.1. to confirm the Selection decision under Appeal and reject the Appeal; or
 - 7.6.2. to refer the Selection decision under Appeal back to the Selection Panel, identifying errors they have made in their deliberations or process, (as per the grounds outlined in clause 7.3), and requesting a new decision is made, or the original decision is confirmed correcting any errors made by the Selection Panel within a timeframe which allows their conclusions to be implemented.

How to Appeal

- 7.7. An Appeal Process is commenced by the Appellant, addressing an email to the Chair of the Selection Panel appealing against a decision made by the Selection Panel that resulted in the athlete not being selected. (“Notice of Appeal”). The email should be

sent to appeals@gbsnowsport.com. The email must be sent within 2 business days of the notification of Selection/non-Selection for a Competition, or within 5 business days of any Squad Selection notification/non-Selection. For BOA lead events, e.g. YOG 2024, given tight deadlines set by the IOC, the Appeal window will be 1 business day.

- 7.8. The Notice of Appeal must clearly set out the details of the decision which is being appealed and include full details of the Appellant's ground(s) of Appeal. The Notice of Appeal should attach any documents or written evidence relevant to the grounds of Appeal and which are relied upon by the Appellant.
- 7.9. All Appeals must be accompanied by a bank transfer of £250 which will be refunded should the Appeal be upheld under Clause 7.6.2 above.
- 7.10. Following the Appellant being informed of the outcome of the Selection Panel's further deliberations under Clause 7.4, the Appellant can raise a Second Appeal Notice if they do not agree with the outcome of the Selection Panels further deliberations. The Second Appeal Notice is reviewed by an independent Appeal Panel. The Second Appeal Notice must be made via email to appeals@gbsnowsport.com and be received by GBS within 2 business days (Squad Selection), or 1 business day (Competition Selection) of the Appellant being informed of the Selection Panel's decision under Clause 6.4. For YOG 2024, given tight deadlines set by the IOC, the Second Appeal Notice must be received by GBS within 2 hours of the Appellant being informed of the Selection Panel's decision under Clause 7.4.
- 7.11. In the event of any Appeal, minutes of the Selection Panel's Selection decisions or of any Appeal hearing will be made available to the Appellant upon request and will be provided within one business day of such request. In some cases, it may be necessary to redact elements of the relevant minutes.

The Appeal Panel

- 7.12. GBS will nominate an Appeal Panel of at least 3 members, none of whom sat on the Selection Panel, and none of whom are conflicted. One of the members of the Appeal Panel will have a legal background. The members will select a Chair of the Appeal Panel.
- 7.13. The Appeal Panel must receive the Second Appeal Notice within the time frames stated in Clause 7.10. The only fee required is when the Appellant first makes an Appeal to the Selection Panel. A second fee is not required if the Appeal reaches the Appeal Panel.
- 7.14. The Chair of the Appeal Panel will convene a meeting to take place within 5 business days of the Second Appeal Notice, (Squad Selection) or, if urgent for reasons of a specific event, then to take place within a time frame which allows their conclusions to be implemented.
- 7.15. The Appeal Panel will investigate the grounds of Appeal set out in the Second Appeal Notice and establish, to their reasonable satisfaction, which of the outcomes set out in

Clause 6.6 is appropriate. The Chair of the Appeal Panel will notify the Selection Panel and the Appellant of their decision immediately after the meeting.

- 7.16. The decision of the Appeal Panel, and if required, subsequent review by the Selection Panel, following the Second Appeal Notice is final. No further Appeal of the same initial grounds of appeal will be considered.

Schedule A: APA Nomination Process

Please refer to Olympic APA Selection Policy published on GBS website

Schedule B: Alpine Skiing Minimum Selection Criteria

Alpine World Cup Squad

- B 1.1. Athletes can be proposed for Selection if they have satisfied the following criteria, to demonstrate they can compete effectively and safely at World Cup level:
- B 1.1.1. At least one of the following results during the current and/or preceding season:
- Top 30 World Cup.
 - European Cup podium.
- B 1.2. If athletes have been on injury status during the most recent season, this may be considered by the Selection Panel when selecting to Squads.
- B 1.3. Athletes must demonstrate commitment to both an on and off snow programme as agreed with the GBS Head Alpine Coach and GBS Head Coach.

Alpine Europa Cup Squad

- B 2.1. Athletes can be proposed for Selection if they have satisfied the following criteria, to demonstrate they can compete effectively and safely at Europa Cup level:
- B 2.1.1. Have scored Europa Cup points in the current and preceding season; or
- B 2.1.2. Have achieved the following points criteria or better based on the FIS point list following the conclusion of the Europa Cup season:

Men/Women	FIS Points
Slalom	35
Giant Slalom	35
Super G	45
Downhill	45

- B 2.2. If athletes have been on injury status during the most recent season, this may be considered by the Selection Panel when selecting to Squads.
- B 2.3. Athletes must demonstrate commitment to both an on and off snow programme as agreed with the GBS Head Alpine Coach and GBS Head Coach.

Alpine FIS Development Squad

- B 3.1. Athletes must be able to demonstrate that they are on a performance trajectory towards EYOWF, Youth Olympic Games, World Junior Championships and onto Europa Cup & World Cup level. Therefore, athletes are eligible for Selection if they have satisfied the following criteria:
- B 3.1.1. Have a top 3 result (year of birth) in an individual Event or Events at the British Championships in the current season; unless non-attendance at the

British Championships has been previously agreed, in writing, with the GBS Head Coach or CEO;

- B 3.1.2. Have achieved the following points criteria or better based on the FIS point list published immediately prior to the relevant selection meeting. All athletes U21 and below must achieve the relevant points criteria in at least two disciplines:

	Year End/FIS Points								
	U18		U21			Senior			
	1st Yr	U18	3rd Yr	4th Yr	U21	6th Yr	7th Yr	8th Yr	9th Yr
Slalom	90	80	70	60	55	50	45	40	35
GS	90	80	70	60	55	50	45	40	35
Super G	105	95	85	75	70	65	60	55	50
Downhill	115	105	95	85	80	75	70	65	60
AC	125	115	105	95	90	85	80	75	70

- B 3.2. If athletes have been on injury status during the most recent season, this may be considered by the Selection Panel when selecting to Squads.
- B 3.3. If, in the absolute discretion of the selection panel, an athlete, U21 and below, is performing consistently at a high level, in one discipline only, then, provided that they have otherwise satisfied the criteria set out in clause B.3.1 they may be considered for selection to the squad.

Under 16 and Under 14 Alpine Race Allocations

- B 4.1. Criteria are set according to an athlete's age group for the following season. Only athletes within the required FIS definition of age group are eligible to be selected to any Under 16 and Under 14 squads. Athletes should be registered on the BASS list by one of the Home Nations.
- B 4.2. For the 2023/2024 season (the "Season"), GBS CASC will follow the process outlined below, (the "Process") when making selections for FIS Children's International races during the Season.
- B 4.3. The Home Nations, or the Head Coach will nominate U16 and U14 athletes to the GBS CASC- prior to the January allocation meeting and any other additional allocation meetings notified, in writing, to The Home Nations or the Head Coach.
- B 4.4. GBS CASC will select athletes for the squads that will represent GBR at certain FIS International Children's races. Selection will be made as soon as possible after the conclusion of early January BASS races.
- B 4.5. GBS CASC will notify, in writing, the Home Nations and the Head Coach, which FIS International Children's Races the BCST will attend during the season. Such information will also be duly posted on the GBS website. Such notifications and posting will be made in the Autumn preceding the Season.

- B 4.6. Selection will be based on the following criteria:
- B 4.6.1. Performance in Alpine (European) based BASS races.
 - B 4.6.2. Performance in any International FIS Children's Event.
- B 4.7. The depth and quality of the competitive field in the above Events will be considered. GBS CASC maintain a discretion to select the best possible Squads to represent GBR at selected Competitions or races.
- B 4.8. The Process will replace all previous criteria and process for the Season. In the circumstances of further local or national lockdowns, or in any other circumstances, GBS CASC may revise the Process and will give notice thereof via the GBS Website. The Appeals Procedure laid down in the Policy will continue to apply to the Process.
- B 4.9. Any athlete (whether in a club or academy or whether racing independently overseas) wishing to attend a FIS International Children's Race which is on the FIS calendar, but which has not been notified to the Home Nations or the Head Coach or posted on the GBS website, in accordance with Clause B.4.5., may apply to GBS to attend such race. Such an application must be made in accordance with the process outlined in the Alpine Race Allocation Policy 2023-24 available on GBS website.

Alpine World Cup Entries

- B 5.1. Any athlete wishing to be considered for entry to a World Cup must meet the FIS minimum World Cup points criteria. The Alpine Head Coach shall propose athletes for entry to individual or Team World Cup Competitions to the GBS Head Coach and GBS Alpine Discipline Committee Chair.
- B 5.2. If more athletes are proposed than quota places are available, the GBS Head Coach and GBS Alpine Discipline Committee Chair have the absolute discretion to select the athletes most likely to achieve the best result at the Competition.
- B 5.3. The GBS Head Coach and GBS Alpine Discipline Committee Chair will consider a range of factors when selecting athletes, but will include:
- B 5.3.1. athletes' FIS rankings in the eligible discipline during the current and preceding season; and
 - B 5.3.2. results obtained in Competitions in the eligible discipline during the current and preceding season, with greater emphasis on more recent results in order to select on current form. The panel will consider, amongst other things, where and in which season points were earned and any other relevant profiling.

Alpine Europa Cup Entries

- B 6.1. Any athlete wishing to be considered for entry to a Europa Cup must meet the FIS minimum Europa Cup points criteria. The GBS Alpine Head Coach shall propose

athletes for entry to individual Europa Cup Competitions to the GBS Head Coach and GBS Alpine Discipline Committee Chair.

- B 6.2. If more athletes are proposed than quota places are available, the GBS Head Coach and GBS Alpine Discipline Committee Chair have discretion to select the athletes most likely to achieve the best result at the Competition.
- B 6.3. The GBS Head Coach and GBS Alpine Discipline Committee Chair will consider a range of factors when selecting athletes, but will include:
 - B 6.3.1. athletes' FIS ranking in the eligible discipline during the current and preceding season; and
 - B 6.3.2. results obtained in Competitions in the eligible discipline during the current and preceding season, with greater emphasis on more recent results in order to select on current form. The panel will consider, amongst other things, where and in which season points were earned and any other relevant profiling.

Other Major Competitions

Alpine Youth Olympic Games

- B.7.1. To be proposed for the Gangwon 2024 Youth Olympic Winter Games, in addition to the eligibility criteria set out in the Youth Olympic Games 2024 Selection Policy which can be found on the GBS website, an athlete:
 - B.7.1.1. must satisfy the FIS Athlete Eligibility; and
 - B.7.1.2. must meet or exceed the Minimum Eligibility Criteria set out below in one or more of the Alpine disciplines.

Minimum Eligibility Criteria

Women & Men	FIS Points	Single FIS Point Score
Slalom	80	70
Giant Slalom	80	70
Super G	80	70
Alpine Combined	115	105

- B.7.2. The Selection Panel will consider a range of factors when selecting athletes, including but not limited to:
 - B.7.2.1. an athlete's world ranking in the eligible discipline at the time of the FIS list published immediately prior to the relevant Selection meeting.

B.7.2.2. results obtained in under 18 or other adult FIS Competitions during the current and preceding season but the Selection Panel may, in its absolute discretion, attach greater weight to more recent results.

B.7.2.3. where and in what competition the points were earned

B.7.3. If there are more athletes that meet the Eligibility and Selection criteria set out in the Policy than quota places available, the Selection Panel has absolute discretion to select the athletes who in their reasonable opinion are most likely to achieve the best result at the Competition.

B.7.4. Crossover in FIS YOG:

B.7.4.1. Once selected to the Youth Olympic Games Team, GBS will also support crossover in certain Events in order to promote athlete development as follows:

Slalom	crossover to GS, AC
Giant Slalom	crossover to SL, SG, AC
Super G	crossover to GS, AC

B.7.5. Selection for other Events (in which athletes have not met the Selection criteria) will be made on a case-by-case basis, with the decision being taken by the GBS Selection Panel. Emphasis on safety will be paramount in Selections for crossover into speed Events.

B.7.6. In extraordinary circumstances, the Selection Panel has absolute discretion to consider (and give additional weight to) any other factors they deem relevant in respect of their nomination decisions including (but not limited to) the likelihood of an athlete being podium competitive in future Olympic Games in accordance with the purpose of the Policy. Any such nominations must be made by a Discipline Head Coach, and must be supported with training and competition data, or technical profiling for consideration by the Selection Panel.

FIS Alpine Junior World Ski Championships

B.8.1. To be proposed for the FIS Alpine Junior World Ski Championships in addition to the eligibility criteria set out in the Policy, an athlete:

B.8.1.1. must meet or exceed the Minimum Eligibility Criteria set out below in one or more of the Alpine disciplines; and

B.8.1.2. must have been born between the dates specified for the particular FIS Alpine Junior World Ski Championships.

Minimum Eligibility Criteria

Men/Women	FIS points
Slalom	55
Giant Slalom	55
Super G	80

- B.8.2. The Selection Panel will select the Team considering the FIS list published immediately prior to the relevant Selection meeting, but significant results following the most recent FIS list will also be considered.
- B.8.3. If more athletes are proposed than quota places are available, the Selection Panel has absolute discretion to select the athletes most likely to achieve the best result at the Competition.
- B.8.4. The Selection Panel will consider a range of factors when selecting athletes, but will include:
- B.8.4.1. athletes' world ranking in the eligible discipline during the current and preceding season; and
 - B.8.4.2. results obtained in Competitions during the current and preceding season, with greater emphasis on more recent results in order to select on current form. The panel will consider, amongst other things, where and in which season points were earned and any other relevant profiling
- B.8.5. In extraordinary circumstances, the Selection Panel has absolute discretion to consider (and give additional weight to) any other factors they deem relevant in respect of their nomination decisions including (but not limited to) the likelihood of an athlete being podium competitive in future Olympic Games in accordance with the purpose of the Policy. Any such nominations must be made by a Discipline Head Coach, and must be supported with training and competition data, or technical profiling for consideration by the Selection Panel.

Team Parallel Slalom

- B 9.1. In selecting to the Team Parallel Slalom (FIS Alpine Junior World Ski Championships Team Event), (maximum three men, three women), the Selection Panel has discretion to select athletes on their ability to produce credible results in the FIS Alpine Junior World Ski Championships Team Event, over their ability to produce credible results in the individual Events. Final Team Selection is at the discretion of the GBS Alpine Head Coach and GBS Team Leader during the FIS Alpine Junior World Ski Championships.
- B 9.2. The Selection Panel will consider a range of factors when selecting athletes, but will include (in no priority):
- B 9.2.1. an athlete's world ranking in the eligible discipline during the qualification period; and
 - B 9.2.2. results obtained in Competitions during the current and preceding season, with greater emphasis on more recent results in order to select on current form. The panel will consider, amongst other things, where and in which season points were earned and any other relevant profiling.

B 9.3. In extraordinary circumstances, the Selection Panel has absolute discretion to consider (and give additional weight to) any other factors they deem relevant in respect of their nomination decisions including (but not limited to) the likelihood of an athlete being podium competitive in future Olympic Games in accordance with the purpose of the Policy. Any such nominations must be made by a Discipline Head Coach, and must be supported with training and competition data, or technical profiling for consideration by the Selection Panel.

Crossover in FIS Alpine Junior World Ski Championships Events

B 9.4. Once selected to the FIS Alpine Junior World Ski Championships Team, GBS will also support crossover in certain Events in order to promote athlete development as follows:

Slalom	crossover to GS, AC
Giant Slalom	crossover to SL, SG, AC
Super G	crossover to GS, AC, DH
DH	crossover to SG, AC

B 9.5. Selection for other Events (in which athletes have not met the Selection criteria) will be made on a case-by-case basis, with the decision being taken by the GBS Selection Panel. Emphasis on safety will be paramount in Selections for crossover into speed Events.

Winter FISU World University Games

B 10.1. To be proposed for Winter FISU World University Games in addition to the eligibility criteria set out in the Policy, an athlete:

B 10.1.1. must meet the BUCS and FISU eligibility criteria and must have satisfied FIS Athlete Eligibility;

B 10.1.2. meet or exceed the Minimum Eligibility Criteria set out below.

Minimum Eligibility Criteria

B 10.2. GBS will consider athletes for Selection to the Winter FISU World University Games based upon the following criteria:

Men/Women	FIS points
Slalom	55
Giant Slalom	55
Super G	60
Alpine Combined	60

- B 10.3. If more athletes are proposed than quota places are available, the Selection Panel has discretion to select the athletes most likely to achieve the best result at the Competition.
- B 10.4. The Selection Panel will consider a range of factors when selecting athletes, but will include:
- B 10.4.1. athletes' FIS ranking in the eligible discipline during the current season; and
 - B 10.4.2. results obtained in Competitions in the eligible discipline during the current season, with greater emphasis on more recent results in order to select on current form. The panel will consider, amongst other things, where and in which season points were earned and any other relevant profiling, and
 - B 10.4.3. athlete readiness to compete.
- B 10.5. In selecting to the Mixed Team Parallel the Selection Panel has discretion to select athletes on their ability to produce credible results in the event, over their ability to produce credible results in the individual Events. Final Team Selection is at the discretion of the GBS Alpine Head Coach and GBS Head Coach.
- B 10.6. The Selection Panel will consider a range of factors when selecting athletes, but will include (in no priority):
- B 10.6.1. an athlete's world ranking in the eligible discipline during the qualification period; and
 - B 10.6.2. results obtained in Competitions during the current and preceding season, with greater emphasis on more recent results in order to select on current form. The panel will consider, amongst other things, where and in which season points were earned and any other relevant profiling.

Schedule C: Cross Country Skiing Minimum Selection Criteria

Cross Country World Cup Squad

- C 1.1. Athletes who have scored an individual top 30 result in the World Cup, World Championships, or Olympic Games in the current or preceding season are automatically selected into the World Cup Squad if they wish to accept their squad nomination
- C 1.2. At the discretion of the Selection Panel, further athletes can be considered for Selection if they have shown consistent performance and met the following FIS points requirements listed in Table 1 below. Due to the change in the FIS Rules regarding the calculation of cross-country FIS points (approved by FIS Cross Country Committee May 2023), the Selection Panel will consider the following: Points earned in races during the 2022-2023 season; Or points earned in races during the 2023-2024 season.

Table 1:

	Men		Women	
	2022-23	2023-24	2022-23	2023-24
Sprint	95	106	100	110
Distance	85	98	95	106

- C 1.3. The targets in Table 1 will also be used to select an athlete who is not a member of the World Cup Squad for a selected World Cup race, with the earliest possibility for this being 1st January of the World Cup/Tour season.
- C 1.4. The values in Table 1 have been empirically derived and reflect the average FIS point scores required to place among the top 67% of the field in a World Cup. This analysis is based on results from 21/22 and 22/23 season. FIS Points scored in World Cup, Tour de Ski, Norwegian and Scandinavian Cups, Scandinavian and Central European National Championships, and OPA races will be considered when assessing athletes. In cases where FIS points have been obtained outside the above races, the GBS Cross Country Head Coaches may consider these, to assure the Selection Panel of their quality.
- C 1.5. If athletes have been on injury status during the most recent season, this may be considered by the Selection Panel when selecting to Squads.

Cross Country Continental Cup Squad

- C 2.1. Athletes who have met the following FIS points requirements listed in Table 2 below will be considered for the Cross Country Continental Cup Squad. Due to the change in the FIS Rules regarding the calculation of cross-country FIS points (approved by FIS Cross Country Committee May 2023), the Selection Panel will consider the following: Points earned in races during the 2022-2023 season; Or points earned in races during

the 2023-2024 season

Table 2:

	Men		Women	
	2022-23	2023-24	2022-23	2023-24
Sprint	165	185	185	214
Distance	125	139	155	174

- C 2.2. Table 2 reflects the FIS points required to place among the top 67% of a Continental Cup (Scandinavian Cup). These values will be indicative for placement into the Continental Cup Squad. Only FIS Points scored in World Cup, Tour de Ski, Norwegian and Scandinavian Cups, Finnish, Scandinavian and European National Championships, and OPA races will be considered when assessing athletes. In cases where FIS points have been obtained outside the above races, the GBS Cross Country Head Coaches may consider these, to assure the Selection Panel of their quality.
- C 2.3. If athletes have been on injury status during the most recent season, this may be considered by the Selection Panel when selecting to Squads.

Cross Country Performance Squad

- C 3.1. Athletes can be considered for the Cross Country Performance Squad if they have met the below FIS point criteria, in Table 3, in current or preceding season in two or more Events. Due to the change in the FIS Rules regarding the calculation of cross-country FIS points (approved by FIS Cross Country Committee May 2023), the Selection Panel will consider the following: Points earned in races during the 2022-2023 season; Or points earned in races during the 2023-2024 season:

Table 3:

	Men		Women	
	2022-23	2023-24	2022-23	2023-24
Sprint	200	236	200	236
Distance	200	237	200	237

- C 3.2. All FIS Events in Central Europe and Scandinavia will be considered for Performance Squad Selection. In cases where FIS points have been obtained outside the above races, the GBS Cross Country Head Coaches may consider these, to assure the Selection Panel of their quality.
- C 3.3. If athletes have been on injury status during the most recent season, this may be considered by the Selection Panel when selecting to Squads.

Cross Country Junior Squad

- C 4.1. Athletes can be considered for the Junior Squad if they were born in 2004 or younger and have met the below FIS point criteria, in Table 4, in the current or preceding season in one or more Event(s). Due to the change in the FIS Rules regarding the calculation of cross-country FIS points (approved by FIS Cross Country Committee May 2023), the Selection Panel will consider the following: Points earned in races during the 2022-2023 season; Or points earned in races during the 2023-2024 season:

Table 4:

	Men		Women	
	2022-23	2023-24	2022-23	2023-24
Sprint	360	437	370	444
Distance	260	321	270	325

- C 4.2. All FIS Events in Central Europe and Scandinavia will be considered for Junior Squad Selection. The Selection Panel has absolute discretion to consider the performance level and field size of the Event where the FIS points are scored before selecting an athlete.
- C 4.3. If athletes have been on injury status during the most recent season, this may be considered by the Selection Panel when selecting to Squads.

Cross Country World Cups & Tours

- C 5.1. The GBS Cross Country Coaches shall nominate athletes for entry to individual World Cup and Tour Competitions, and these shall be ratified by the Nordic Discipline Committee Chair and GBS Head Coach. Athletes must consistently meet criteria stated in Table 1 above, in section C.1.2, and the relevant FIS World Cup and Tour Entry requirements.
- C 5.2. Athletes in the World Cup Squad are automatically qualified for World Cups and Tour Events, however the GBS Cross Country Coaches have absolute discretion on Selection to World Cups, where athletes have not achieved the minimum FIS points in the relevant discipline.
- C 5.3. Athletes who are not part of the Cross Country World Cup squad will not be considered for Selection for World Cups or Tours until after 1st January of the World Cup/Tour season. Minimum FIS criteria must have been met in order for athletes to be considered. GBS Cross Country coaches, the Nordic Discipline Committee Chair, and the GBS Head Coach have absolute discretion on final Selection to World Cups & Tours. If there are more athletes eligible and qualified for Selection than quota places allocated, the Nordic Discipline Committee Chair and the GBS Head Coach have absolute discretion to select athletes who, in their reasonable opinion, are most likely to achieve the best result at the Competition. Such factors that may be considered but not limited to, (in no priority), will be:

- C 5.3.1. athletes' FIS ranking in the eligible discipline during the current season;
- C 5.3.2. results obtained in Competitions in the eligible discipline during the current season;
- C 5.3.3. and results obtained in Competitions during the season generally, with greater emphasis on more recent results in order to select on current form.
- C 5.3.4. if the selection could provide opportunities for the long-term development of athletes who are, in the opinion of the Selection Panel, capable of being podium competitive at international Events as per the Purpose of this Policy.

Cross Country Team Event/Relays at World Cups & Tours

- C 6.1. Only athletes who have achieved a result of less than 135 FIS points in any distance or technique in the current season will be eligible for Selection to the Team Event. World Cup Squad members can be selected to the Team Event despite not having achieved 135 FIS points in the relevant discipline (technique and distance).
- C 6.2. The GBS Cross Country Coaches, the GBS Head Coach, and the Nordic Discipline Committee Chair have absolute discretion to select the athletes who they believe will achieve the best result in the Event. Such factors that may be considered by but not limited to, (in no priority), will be:
 - C 6.2.1. FIS points accumulated during the current season;
 - C 6.2.2. athletes' world ranking in any discipline during the current season; and
 - C 6.2.3. results obtained in Competitions during the season generally, with greater emphasis on more recent results in order to select on current form.

Other Major Competitions

Youth Olympic Games – Cross Country Criteria

Sprint Free, 7.5km Classic, Mixed Relay 4x5km
YOB 2006-2008
Minimum Eligibility Criteria

- C.7.1. In addition to the eligibility criteria set out in the Youth Olympic Games 2024 Selection Policy which can be found on the GBS website, GBS will consider athletes for Selection to YOG based upon the following criteria:
- C.7.2. Due to the change in the FIS Rules regarding the calculation of cross-country FIS points (approved by FIS Cross Country Committee May 2023), the Selection Panel will consider the following: Points earned in races during the 2022-2023 season; Or points earned in races during the 2023-2024 season before the end of the qualification period.

- C.7.3. The athlete must have achieved either the below FIS Point criteria in the relevant discipline during the 2022-2023 season in a European or Scandinavian FIS race.

Event	Men	Women
Sprint	400	430
Distance	230	255

Or;

The athlete must have achieved the below FIS Point criteria in the relevant discipline during the 2023-2024 season in a European or Scandinavian FIS race.

Event	Men	Women
Sprint	492	524
Distance	274	298

- C.7.4. If an athlete has been selected for one discipline (sprint or distance) only, it is at the discretion of the Performance Pathway Coach or YOG Team Leader to allow these athletes to start in the respective other discipline.
- C.7.5. In addition to the above criteria, the Selection Panel must also be satisfied with the performance level and field size of the Event where the FIS points are scored before selecting an athlete and may use their discretion to select athletes on this basis. The Selection Panel has absolute discretion to consider results scored in non-FIS Events as qualification Events.
- C.7.6. If there are more athletes that meet the Eligibility and Selection criteria set out in the Policy than quota places available, the Selection Panel has absolute discretion to select the athletes who in their reasonable opinion are most likely to achieve the best result at the Competition.
- C.7.7. The Selection Panel will consider a range of factors when selecting athletes, but will include:
- C.7.7.1. athletes' world ranking in the eligible discipline during the current season;
 - C.7.7.2. results (including non-FIS Events) obtained in the eligible discipline during the current season; and
 - C.7.7.3. results obtained in Competitions during the season generally, including non-FIS Events, with greater emphasis on more recent results in order to select on current form.
- C.7.8. In extraordinary circumstances, the Selection Panel has absolute discretion to consider (and give additional weight to) any other factors they deem relevant in respect of their nomination decisions including (but not limited to) the likelihood of an athlete being podium competitive in future Olympic Games in accordance with the purpose of the Policy. Any such nominations must be made by a Discipline Head Coach, and must be supported with training and competition data, or technical profiling for consideration by the Selection Panel.

FIS Nordic Junior World Ski Championships

C 8.1. To be proposed for the FIS Nordic Junior World Championships, in addition to the eligibility criteria set out in the Policy, an athlete:

C 8.1.1. must satisfy the FIS Athlete Eligibility; and

C 8.1.2. must meet or exceed the Minimum Eligibility Criteria set out below

Minimum Eligibility Criteria

C 8.2. GBS will consider athletes for Selection to the FIS Nordic Junior World Championships based upon the following criteria.

The athlete must have achieved the below FIS Point criteria in the relevant discipline in the current or preceding season:

	Men		Women	
	2022-23	2023-24	2022-23	2023-24
Sprint	320	394	340	426
Distance	200	237	220	258

C 8.3. The Selection Panel has absolute discretion to consider the performance level and field size of the Event where the FIS points are scored before selecting an athlete. The Selection Panel has absolute discretion to consider results scored in non-FIS Events as qualification Events.

C 8.4. If an athlete has been selected for one discipline (sprint or distance) only, it is at the discretion of the GBS Head Coach or Cross Country Coaches to allow these athletes to start in the respective other discipline.

C 8.5. If there are more athletes that meet the Eligibility and Selection criteria set out in the Policy than quota places available, the Selection Panel has absolute discretion to select the athletes who in their reasonable opinion are most likely to achieve the best result at the FIS Nordic Junior World Championships.

C 8.6. The Selection Panel will consider a range of factors when selecting athletes, but will include:

C 8.6.1. athletes' world ranking in the eligible discipline during the current season;

C 8.6.2. results (including non-FIS Events) obtained in the eligible discipline during the current season; and

- C 8.6.3. results obtained in Competitions during the season generally, including non-FIS Events, with greater emphasis on more recent results in order to select on current form.
- C 8.7. For the avoidance of doubt, for Selection for the Team Event, the GBS Cross Country Head Coaches and the GBS Head Coach have absolute discretion to select the athletes who in their reasonable opinion are most likely to achieve the best result in the Team Event, as per the primary purpose of the Policy. This decision will be made in venue at the event, and this decision will be final.
- C 8.8. The Selection Panel will consider a range of factors when selecting athletes to the Team Event, but will include (in no priority):
 - C 8.8.1. recent results achieved at both FIS and non-FIS events during the current and preceding season;
 - C 8.8.2. current form based on any results achieved at the FIS Nordic Junior World Championships in question; and
 - C 8.8.3. potential impact (positive or negative) that the Team event will have on expected performance in individual events at the FIS Nordic Junior World Championships.
- C 8.9. In extraordinary circumstances, the Selection Panel has absolute discretion to consider (and give additional weight to) any other factors they deem relevant in respect of their nomination decisions including (but not limited to) the likelihood of an athlete being podium competitive in future Olympic Games in accordance with the purpose of the Policy. Any such nominations must be made by a Discipline Head Coach, and must be supported with training and competition data, or technical profiling for consideration by the Selection Panel.

FIS Nordic U23 World Ski Championships

- C 9.1. To be proposed for the FIS Nordic U23 World Championships, in addition to the eligibility criteria set out in the Policy, an athlete.
 - C 9.1.1. must satisfy the FIS Athlete Eligibility; and
 - C 9.1.2. must meet or exceed the Minimum Eligibility Criteria set out below.

Minimum Eligibility Criteria

- C 9.2. GBS will consider athletes for Selection to the FIS Nordic U23 World Championships based upon the following criteria.

The athlete must have achieved the below FIS Point criteria in the relevant discipline in the current or preceding season:

	Men	Women
--	------------	--------------

	2022-23	2023-24	2022-23	2023-24
Sprint	195	216	200	236
Distance	170	197	180	209

- C 9.3. The Selection Panel has absolute discretion to consider the performance level and field size of the Event where the FIS points are scored before selecting an athlete. The Selection Panel has absolute discretion to consider results scored in non-FIS Events as qualification Events.
- C 9.4. If an athlete has been selected for one discipline (sprint or distance) only, it is at the discretion of the Head Coach or Cross Country Coaches to allow these athletes to start in the respective other discipline.
- C 9.5. If there are more athletes that meet the Eligibility and Selection criteria set out in the Policy than quota places available, the Selection Panel has absolute discretion to select the athletes who in their reasonable opinion are most likely to achieve the best result at the FIS Nordic U23 World Championships. The Selection Panel will consider a range of factors when selecting athletes, but will include:
- C 9.5.1. athletes' world ranking in the eligible discipline during the current season;
 - C 9.5.2. results (including non-FIS Events) obtained in the eligible discipline during the current season; and
 - C 9.5.3. results obtained in Competitions during the season generally, including non-FIS Events, with greater emphasis on more recent results in order to select on current form.
- C 9.6. In extraordinary circumstances, the Selection Panel has absolute discretion to consider (and give additional weight to) any other factors they deem relevant in respect of their nomination decisions including (but not limited to) the likelihood of an athlete being podium competitive in future Olympic Games in accordance with the purpose of the Policy. Any such nominations must be made by a Discipline Head Coach, and must be supported with training and competition data, or technical profiling for consideration by the Selection Panel.

OPA Games

- C.10.1. Athletes can be considered for Selection if they have met the below FIS point criteria or relevant % result in any category, (Distance or Sprint), in the current or preceding season. The Selection Panel has absolute discretion to consider results scored in non-FIS Events as qualification Events.

YOB of Athlete	Men		Women	
	2022-23	2023-24	2022-23	2023-24
2008	One result better than 28% YOB (or younger) winner		One result better than 32% YOB (or younger) winner	
2007	One result better than 25% YOB (or younger) winner		One result better than 28% YOB (or younger) winner	
2006	One result better than 23% YOB (or younger) winner		One result better than 25% YOB (or younger) winner	
2004-2005	One result better than 270 FIS points	One result better than 325 FIS points	One result better than 280 FIS points	One result better than 343 FIS points

- C.10.2. The Selection Panel has absolute discretion to consider the performance level and field size of the Event where the FIS points or results in non-FIS events are scored before selecting an athlete.
- C.10.3. In extraordinary circumstances, the Selection Panel has absolute discretion to consider (and give additional weight to) any other factors they deem relevant in respect of their nomination decisions including (but not limited to) the likelihood of an athlete being podium competitive in future Olympic Games in accordance with the purpose of the Policy. Any such nominations must be made by a Discipline Head Coach, and must be supported with training and competition data, or technical profiling for consideration by the Selection Panel.

Winter FISU World University Games

- C.11.1. To be proposed for Winter FISU World University Games in addition to the eligibility criteria set out in the Policy, an athlete:
- C.11.1.1. must meet the BUCS and FISU eligibility criteria and must have satisfied FIS Athlete Eligibility; and
- C.11.1.2. meet or exceed the Minimum Eligibility Criteria set out below.

Minimum Eligibility Criteria

- C.11.2. GBS will consider athletes for Selection to the Winter FISU World University Games based upon the following criteria:

	Men		Women	
	2022-23	2023-24	2022-23	2023-24
Sprint	255	299	260	321
Distance	230	274	240	288

- C.11.3. If more athletes are proposed than quota places are available, the Selection Panel has discretion to select the athletes most likely to achieve the best result at the Competition.
- C.11.4. The Selection Panel will consider a range of factors when selecting athletes, but will include:
 - C.11.4.1. athletes' FIS ranking in the eligible discipline during the current season; and
 - C.11.4.2. results obtained in Competitions in the eligible discipline during the current season; and
 - C.11.4.3. athlete readiness to compete.
- C.11.5. In extraordinary circumstances, the Selection Panel has absolute discretion to consider (and give additional weight to) any other factors they deem relevant in respect of their nomination decisions including (but not limited to) the likelihood of an athlete being podium competitive in future Olympic Games in accordance with the purpose of the Policy. Any such nominations must be made by a Discipline Head Coach, and must be supported with training and competition data, or technical profiling for consideration by the Selection Panel.

Schedule D: Freestyle - Aerials Minimum Selection Criteria

Aerials World Cup Squad

- D 1.1. To be eligible for selection, athletes must have met the minimum FIS points criteria based on the first FIS points list of the coming season:

Men	Women
Athletes must have achieved a minimum of 50 FIS Points in current or preceding season	Athletes must have achieved a minimum of 50 FIS Points in current or preceding season

- D 1.2. Athletes must also have qualified for jumping on snow (Women) two jumps of DD at least 3.15 or (Men) two jumps of DD at least 3.2 in the current or preceding season.
- D 1.3. Athletes must also demonstrate commitment to both an on and off snow programme.

Aerials World Cup Entries

- D 2.1. Athletes must also have qualified for jumping on snow (Women) two jumps of DD at least 3.15 or (Men) two jumps of DD at least 3.2, and received a minimum judges' score of 70 (Women's) or 85 (Men) in snow (not water ramp) competition, on two occasions.
- D 2.2. For the avoidance of doubt, two scores obtained in a single competition are admissible. Candidates seeking such entry after their first season of competition at this level shall qualify either by this means or by having current FIS Points equivalent to the award of an additional quota spot.

Aerials Europa Cup Entries

- D 3.1. Athletes should have qualified two different inverted Aerial manoeuvres of DD at least 2.60, for performance on snow D 4.1

Schedule E: Freestyle - Moguls Minimum Selection Criteria

Moguls World Cup Squad

- E 1.1. To be eligible for selection, athletes must have met the minimum FIS points criteria based on the first FIS points list of the coming season:

Men	Women
Athletes must have achieved a minimum of 50 FIS Points.	Athletes must have achieved a minimum of 50 FIS Points.

- E 1.2. Both men and women must have also achieved the below criteria in the current or preceding season:

2 x Top 50% at World Cup

OR

2 x Top 30% at Europa or Nor-Am Cup

- E 1.3. The Panel has discretion to consider the depth and quality of the competitive field in events where results are obtained. If FIS points have been obtained outside of Europa Cup, World Cup, or Nor-Am Cups, eligibility for selection must be approved by the GBS Moguls Coach(es).

- E 1.4. Athletes must also demonstrate the below

1.4.1. Commitment to both an on and off snow programme as agreed with the GBS Head Coach and GBS Moguls Coach(es)

1.4.2. Upwards performance trajectory evident in results in current or preceding season, and/or GBS Moguls Profiling Tool.

- E 1.5. The Selection Panel will make Selections following publication of the first FIS point list of each season. A further review will take place in December of each year in line with the release of the second FIS point list.

- E 1.6. If athletes have been on injury status during the most recent season, this may be considered by the Selection Panel when selecting to Squads.

Moguls World Cup Entries

- E 2.1. Any athlete wishing to be considered for entry to a World Cup must meet the minimum FIS points criteria required to enter a World Cup as outlined by FIS. The GBS Moguls Coach or Programme Manager shall nominate athletes for entry to individual World Cup Competitions, and these shall be ratified by the Freestyle Discipline Committee Chair and GBS Head Coach.

- E 2.2. If more athletes are proposed than quota places are available, the Freestyle Discipline Committee Chair and GBS Head Coach have discretion to select the athletes most likely to achieve the best result at the Competition.
- E 2.3. The Freestyle Discipline Committee Chair and GBS Head Coach will consider a range of factors when selecting athletes, but will include:
 - E 2.3.1. Athletes' FIS ranking in the eligible discipline during the current and preceding season;
 - E 2.3.2. Results obtained in Competitions in the eligible discipline during the current and preceding season
 - E 2.3.3. Athlete performance trajectory informed by results in current or preceding season, and/or GBS Moguls Profiling Tool.

Moguls Continental Cup Entries

- E 3.1. Any athlete wishing to compete in a Moguls Continental Cup must meet the minimum FIS point criteria as outlined by FIS. The GBS Moguls Coach or Programme Manager for the relevant Event shall nominate athletes for entry to individual Continental Cup Competitions, and these shall be ratified by the Freestyle Discipline Committee Chair and GBS Head Coach.
- E 3.2. If more athletes are proposed than quota places are available, the Freestyle Discipline Committee Chair and GBS Head Coach have discretion to select the athletes most likely to achieve the best result at the Competition.
- E 3.3. The Freestyle Discipline Committee Chair and GBS Head Coach will consider a range of factors when selecting athletes, but will include:
 - E 3.3.1. Athletes' FIS ranking in the eligible discipline during the current or preceding season;
 - E 3.3.2. Results obtained in Competitions in the eligible discipline during the current or preceding season; and
 - E 3.3.3. Athlete performance trajectory informed by results in current or preceding season.

Other Major Competitions

Youth Olympic Games

Dual Moguls, Mixed Team
YOB 2006-2009
Minimum Eligibility Criteria

E 4.1. In addition to the eligibility criteria set out in the Youth Olympic Games 2024 Selection Policy which can be found on the GBS website, GBS will consider athletes for Selection to the YOG based upon the following criteria:

Men	Women
A Criteria (2006-2008 YOB) Achieved two top 16 results at a Europa Cup in the current or preceding season. These results can be from a mixture of MO and/or DM events.	A Criteria (2006-2008 YOB) Achieved two top 8 results at a Europa Cup in the current or preceding season. These results can be from a mixture of MO and/or DM events.
B Criteria (2009 YOB) Achieved a top 8 result in a FIS OPN (or equivalent) in the current season in either MO or DM.	B Criteria (2009 YOB) Achieved a top 5 result in a FIS OPN (or equivalent) in the current season in either MO or DM.

E 4.2. The Panel has discretion to consider the depth and quality of the competitive field in events where results are obtained.

E 4.3. If there are more athletes that meet the Eligibility and Selection criteria set out in the Policy than quota places available, the Selection Panel has absolute discretion to select the athletes who in their reasonable opinion are most likely to achieve the best result at the Competition.

E 4.4. The Selection Panel will consider a range of factors when selecting athletes, but will include:

E 4.4.1. athletes' FIS ranking in the eligible discipline during the current or preceding season;

E 4.4.2. results obtained in Competitions in the eligible discipline during the current season; and

E 4.4.3. athletes' readiness to compete, taking into consideration whether the athlete has produced a singles mogul score of 58 or higher for the men or 50 or higher for the women.

E 4.5. In extraordinary circumstances, the Selection Panel has absolute discretion to consider (and give additional weight to) any other factors they deem relevant in respect of their nomination decisions including (but not limited to) the likelihood of an athlete being podium competitive in future.

E 4.6. Olympic Games in accordance with the purpose of the Policy. Any such nominations must be made by a Discipline Head Coach, and must be supported with training and competition data, or technical profiling for consideration by the Selection Panel.

FIS Freestyle Junior World Ski Championships

E 5.1. To be proposed for the FIS Freestyle Junior World Ski Championships, in addition to the eligibility criteria set out in the Policy, an athlete:

E 5.1.1. must satisfy the FIS Athlete Eligibility; and

E 5.1.2. must meet or exceed the Minimum Eligibility Criteria set out below.

Minimum Eligibility Criteria

E 5.2. GBS will consider athletes for Selection to the FIS Freestyle Junior World Ski Championships based upon the following criteria:

Men	Women
Athletes must have competed in a Europa Cup, World Cup, or Nor-Am Cup during the current season AND have a minimum of 40 FIS points.	Athletes must have competed in a Europa Cup, World Cup, or Nor-Am Cup during the current season AND have a minimum of 40 FIS points.

E 5.3. The Panel has discretion to consider the depth and quality of the competitive field in events where results are obtained.

E 5.4. Performances in the last two Europa Cup, World Cup, or Nor-Am Cup Competitions will be considered by the Selection Panel to fill quota spots qualified by GBR. The Panel has discretion to consider the depth and quality of the competitive field in events where results are obtained.

E 5.5. If more athletes are proposed than quota places are available, the Selection Panel has discretion to select the athletes most likely to achieve the best result at the Competition.

E 5.6. The Selection Panel will consider a range of factors when selecting athletes, but will include:

E 5.6.1. Athletes' FIS ranking in the eligible discipline during the current or preceding season;

E 5.6.2. Results obtained in Competitions in the eligible discipline during the current or preceding season; and

E 5.6.3. Athlete performance trajectory informed by results in current or preceding season.

E 5.7. In extraordinary circumstances, the Selection Panel has absolute discretion to consider (and give additional weight to) any other factors they deem relevant in respect of their nomination decisions including (but not limited to) the likelihood of an athlete being podium competitive in future Olympic Games in accordance with the purpose of the

Policy. Any such nominations must be made by a Discipline Coach, and must be supported with training and competition data, or technical profiling for consideration by the Selection Panel.

Winter FISU World University Games

- E.6.1. To be proposed for the Winter FISU World University Games, in addition to the eligibility criteria set out in the Policy, an athlete:
 - E.6.1.1 must satisfy the BUCS and FISU eligibility criteria and must have satisfied FIS Athlete Eligibility; and
 - E.6.1.2 must meet or exceed the Minimum Eligibility Criteria set out below:
- E.6.2 GBS will consider athletes for Selection to the Winter FISU World University Games based upon the following criteria:
 - E.6.2.1. Athletes must have two results at Continental Cup level or higher; results not gained at Europa Cup competitions shall be subject to additional scrutiny by the Head Coach to assure the Panel of their quality.
 - E.6.2.2. If more athletes are proposed than quota places are available, the Selection Panel has discretion to select the athletes most likely to achieve the best result at the Competition.
- E.6.4 The Selection Panel will consider a range of factors when selecting athletes, but will include:
 - E.6.4.1. athletes' FIS ranking in the eligible discipline during the current season; and
 - E.6.4.2. results obtained in Competitions in the eligible discipline during the current season; and
 - E.6.4.3. athlete readiness to compete.
- E.6.5 In extraordinary circumstances, the Selection Panel has absolute discretion to consider (and give additional weight to) any other factors they deem relevant in respect of their nomination decisions including (but not limited to) the likelihood of an athlete being podium competitive in future Olympic Games in accordance with the purpose of the Policy. Any such nominations must be made by a Discipline Head Coach, and must be supported with training and competition data, or technical profiling for consideration by the Selection Panel.

Schedule F: Freestyle – Ski Cross Minimum Selection Criteria

Ski Cross World Cup Squad

- F 1.1. GBS will consider athletes for Selection to the GB Ski Cross Squad based upon the following criteria:

Men	Women
Athletes must have achieved a minimum of two Top 32 finishes in Ski Cross World Cup during the current or preceding season.	Athletes must have achieved a minimum of two Top 16 finishes in Ski Cross World Cup during the current or preceding season.

Men	Women
Athletes must have achieved a minimum of two Top 32 finishes in Ski Cross World Cup during the current or preceding season	Athletes must have achieved a minimum of two Top 16 finishes in Ski Cross World Cup during the current or preceding season.

- F 1.2. The Panel has discretion to consider the depth and quality of the competitive field in events where results are obtained. Athletes must also meet the criteria listed below at F.1.3 and F.1.4.
- F 1.3. Athletes must be able to perform the following skills in their chosen discipline as assessed by the GBS discipline Head Coach:
- F 1.3.1. Consistently land a straight jump of 15-20m (Men) or 12-15m (Women);
 - F 1.3.2. Produce an amplitude of 1m (Men) or 50cm (Women) in a half pipe run;
 - F 1.3.3. Complete a giant slalom course using edges; and
 - F 1.3.4. Experience of producing competitive gate starts.
- F 1.4. Athletes must also demonstrate:
- F 1.4.1. Commitment to a dry land training programme agreed with the GBS Ski Cross Head Coach; and
 - F 1.4.2. Commitment to a full preseason training schedule (mid-June start), as agreed with GBS Ski Cross Head Coach, including a minimum of three GBS summer training camps (where available)
- F 1.5. If athletes have been on injury status during the most recent season, this may be considered by the Selection Panel when selecting to Squads.

Ski Cross Europa Cup Squad

F 2.1. Athletes must meet the following minimum FIS point criteria:

Men	Women
Athletes must have achieved a minimum of 50 FIS Points.	Athletes must have achieved a minimum of 50 FIS Points.

F 2.2. The Panel has discretion to consider the depth and quality of the competitive field in events where these FIS Points were achieved. Athletes must also meet the criteria listed below from F.2.3 to F.2.5.

F 2.3. Athletes must be able to perform the following skills in their chosen discipline as assessed by the GBS Ski Cross Head Coach:

F 2.3.1. Consistently land subsequent straight jumps of 10m (Men) or 8m (Women), with a good speed management between features;

F 2.3.2. Produce a half-pipe run reaching the top of the coping;

F 2.3.3. Experience in a giant slalom course using edges; and

F 2.3.4. Experience of producing competitive gate starts.

F 2.4. Athletes must have competed in a minimum of 2 Europa Cups in the previous season.

F 2.5. Athletes must also demonstrate:

F 2.5.1. Commitment to a dry land training programme agreed with the GBS Ski Cross Head Coach; and

F 2.5.2. Commitment to at least three GBS EC training camps or equivalent external non-GBS programme as agreed with the GBS Ski Cross Europa Cup Coach and GBS Cross Head Coach.

F 2.6. Selection proposals will be made following publication of the first FIS point list.

F 2.7. If athletes have been on injury status during the most recent season, this may be considered by the Selection Panel when selecting to Squads.

Ski Cross World Cup Entries

F 3.1. Any athlete wishing to be considered for entry to a World Cup must meet the minimum FIS points criteria required to enter a World Cup as outlined by FIS. The GBS Ski Cross Head Coach or Programme Manager shall nominate athletes for entry to individual World Cup Competitions, and these shall be ratified by the Freestyle Discipline Committee Chair and GBS Head Coach.

- F 3.2. If more athletes are proposed than quota places are available, the Freestyle Discipline Committee Chair and GBS Head Coach have discretion to select the athletes most likely to achieve the best result at the Competition.
- F 3.3. The Freestyle Discipline Committee Chair and GBS Head Coach will consider a range of factors when selecting athletes, but will include:
- F 3.3.1. athletes' FIS ranking in the eligible discipline during the current and preceding season; and
 - F 3.3.2. results obtained in Competitions in the eligible discipline during the current season. The Panel has discretion to consider the depth and quality of the competitive field in events where results are obtained.

Ski Cross Europa Cup Entries

- F 4.1. Any athlete wishing to compete in a Europa Cup must meet the minimum FIS point criteria to enter a Europa Cup as outlined by FIS. The GBS Ski Cross Head Coach or Programme Manager shall nominate athletes for entry to individual World Cup Competitions, and these shall be ratified by the Freestyle Discipline Committee Chair and GBS Head Coach.
- F 4.2. If more athletes are proposed than quota places are available, the Freestyle Discipline Committee Chair and GBS Head Coach have discretion to select the athletes most likely to achieve the best result at the Competition.
- F 4.3. The Freestyle Discipline Committee Chair and GBS Head Coach will consider a range of factors when selecting athletes, but will include:
- F 4.3.1. athletes' FIS ranking in the eligible discipline during the current or preceding season; and
 - F 4.3.2. results obtained in Competitions in the eligible discipline during the current season.

Other Major Competitions

Youth Olympic Games

Ski Cross YOG Criteria
Individual, Mixed Team
YOB 2006-2007
Minimum Eligibility Criteria

- F.5.1 In addition to the eligibility criteria set out in the Youth Olympic Games 2024 Selection Policy which can be found on the GBS website, GBS will consider athletes for Selection to the YOG based upon the following criteria:

A Criteria (2006 YOB)
Achieved top 67% in Ski Cross Junior World Championships in preceding season OR 2 x top 50% at Ski Cross FIS Events in the current or preceding season (at least one must come from the current season)

B Criteria (2007 YOB)
Competed in 2 x Ski Cross FIS Events AND Achieved top 50% in one Ski Cross FIS event in the current season

- F.5.2. The Panel has discretion to consider the depth and quality of the competitive field in events where results are obtained.
- F.5.3. Athletes must also have attended one GBS training camp in order for GBS coaches to validate performance level is as required for YOG.
- F.5.4. If there are more athletes that meet the Eligibility and Selection criteria set out in the Policy than quota places available, the Selection Panel has absolute discretion to select the athletes who in their reasonable opinion are most likely to achieve the best result at the competition.
- F.5.5. The Selection Panel will consider a range of factors when selecting athletes, but will include:
- F.5.5.1. athletes' FIS ranking in the eligible discipline during the current and preceding season
 - F.5.5.2. results obtained in competitions in the eligible discipline during the current season; and
 - F.5.5.3. athlete readiness to compete.
- F.5.6. In extraordinary circumstances, the Selection Panel has absolute discretion to consider (and give additional weight to) any other factors they deem relevant in respect of their nomination decisions including (but not limited to) the likelihood of an athlete being podium competitive in future Olympic Games in accordance with the purpose of the Policy. Any such nominations must be made by a Discipline Head Coach, and must be supported with training and competition data, or technical profiling for consideration by the Selection Panel.

FIS Freestyle Junior World Ski Championships

- F 6.1 To be proposed for the FIS Freestyle Junior World Ski Championships, in addition to the eligibility criteria set out in the Policy, an athlete:
- F 6.1.1. must satisfy the FIS Age and Points Athlete Eligibility; and
 - F 6.1.2. must meet or exceed the Minimum Eligibility Criteria set out below.

Minimum Eligibility Criteria

- F 6.2. GBS will consider athletes for Selection to the FIS Freestyle Junior World Ski Championships based upon the following criteria:

Men	Women
Athletes must have achieved a minimum of 40 FIS points.	Athletes must have achieved a minimum of 40 FIS points.

- F 6.3. If FIS points have been obtained outside of Europa Cups, eligibility for selection must be approved by the GBS Ski Cross Head Coach. The Panel has discretion to consider the depth and quality of the competitive field in events where results are obtained.
- F 6.4. If there are more athletes that meet the Eligibility and Selection criteria set out in the Policy than quota places available, the Selection Panel has absolute discretion to select the athletes who in their reasonable opinion are most likely to achieve the best result at the FIS Freestyle Junior World Ski Championships.
- F 6.5. The Selection Panel will consider a range of factors when selecting athletes, but will include:
- F 6.5.1. FIS ranking against last published FIS point list preceding FIS Freestyle Junior World Ski Championships selection meeting;
 - F 6.5.2. athletes' FIS ranking in the eligible discipline during the current and preceding season; and
 - F 6.5.3. results obtained in competitions in the eligible discipline during the current season.
- F 6.6. In extraordinary circumstances, the Selection Panel has absolute discretion to consider (and give additional weight to) any other factors they deem relevant in respect of their nomination decisions including (but not limited to) the likelihood of an athlete being podium competitive in future Olympic Games in accordance with the purpose of the Policy. Any such nominations must be made by a Discipline Head Coach, and must be supported with training and competition data, or technical profiling for consideration by the Selection Panel.

Winter FISU World University Games

- F.7.1 To be proposed for the Winter FISU World University Games, in addition to the eligibility criteria set out in the Policy, an athlete:
- F.7.1.1 must satisfy the BUCS and FISU eligibility criteria and must have satisfied FIS Athlete Eligibility; and
 - F.7.1.2 must meet or exceed the Minimum Eligibility Criteria set out below:

- F.7.2 GBS will consider athletes for Selection to the Winter FISU World University Games based upon the following criteria:
- F.7.2.1 athletes must have two results at Continental Cup level or higher; results not gained at Europa Cup competitions shall be subject to additional scrutiny by the Head Coach to assure the Panel of their quality.
- F.7.3 If more athletes are proposed than quota places are available, the Selection Panel has discretion to select the athletes most likely to achieve the best result at the Competition.
- F.7.4 The Selection Panel will consider a range of factors when selecting athletes, but will include:
- F.7.4.1 athletes' FIS ranking in the eligible discipline during the current season; and
 - F.7.4.2 results obtained in Competitions in the eligible discipline during the current season; and
 - F.7.4.3 athlete readiness to compete.
- F.7.5 In extraordinary circumstances, the Selection Panel has absolute discretion to consider (and give additional weight to) any other factors they deem relevant in respect of their nomination decisions including (but not limited to) the likelihood of an athlete being podium competitive in future Olympic Games in accordance with the purpose of the Policy. Any such nominations must be made by a Discipline Head Coach, and must be supported with training and competition data, or technical profiling for consideration by the Selection Panel.

Schedule G: Freestyle - Ski Halfpipe Minimum Selection Criteria

Freestyle Ski World Cup Squad (Halfpipe) (A Squad)

- G 1.1. To be eligible for consideration for Selection to the GBS Freestyle Ski World Cup Squad (Halfpipe), athletes must have proven their technical performance level to be at (or above) the standard described in the table below.

Men	Women
Athletes must have achieved 2 x Top 12 results at World Cup or Olympic Winter Games in the current or preceding season	Athletes must have achieved 2 x Top 12 results at World Cup or Olympic Winter Games in the current or preceding season

- G 1.2. The Panel has discretion to consider the depth and quality of the competitive field in events where results are obtained.
- G 1.3. Athletes must also demonstrate commitment to both an on and off snow programme as agreed with the GBS Head Coach and GBS Freestyle Ski Coach.
- G 1.4. If athletes have been on injury status during the most recent season, this may be considered by the Selection Panel when selecting to Squads.

Freestyle Ski Next Generation Cup Squad (Halfpipe) (previously B Squad)

- G 2.1. Selection for Europa Cup Freestyle Ski Squad (Halfpipe) will be made on a case-by-case application basis. For further details, email programme@gbsnowsport.com. Each case will be considered in relation to current world class performance levels. GBS currently have no programme at this level, but on selection to the GBS Freestyle Halfpipe Next Generation Squad, athletes will discuss individual performance plans with GBS Freestyle Ski Head Coach to agree how GBS can support athletes throughout the winter season in training and competition.
- G 2.2. To be considered for NG selection, it is required that a male athlete can maintain an average amplitude in excess of 2m throughout a top to bottom Halfpipe run with a minimum trick requirement of two different 900s.
- G 2.3. To be considered for NG selection, it is required that a female athlete can maintain an average amplitude in excess of 1m throughout a top to bottom Halfpipe run with a minimum trick requirement of two different 540s.

Freestyle Ski World Cup Entries (Halfpipe)

- G.3.1. Any athlete wishing to be considered for entry to a Ski Halfpipe World Cup must meet the FIS minimum World Cup points criteria. The GBS Freestyle Ski Head Coach for the relevant Event shall propose athletes for entry to individual World Cup Competitions,

and these shall be ratified by the Freestyle Discipline Committee Chair and GBS Head Coach.

- G.3.2. If more athletes are proposed than quota places are available, the Freestyle Discipline Committee Chair and GBS Head Coach have discretion to select the athletes most likely to achieve the best result at the Competition.
- G.3.3. The Freestyle Discipline Committee Chair and GBS Head Coach will consider a range of factors when selecting athletes, but will include:
 - G 3.3.1. athletes' FIS ranking in the eligible discipline during the current and preceding season;
 - G 3.3.2. results obtained in Competitions in the eligible discipline during the current season; and
 - G 3.3.3. athletes' Technical Profile and readiness to compete.

Freestyle Ski Continental Cup Entries (Halfpipe)

- G 4.1. Any athlete wishing to compete in a Ski Halfpipe Continental Cup must meet the minimum FIS point criteria as outlined by FIS. The GBS Freestyle Ski Head Coach for the relevant Event shall propose athletes for entry to individual Continental Cup Competitions, and these shall be ratified by the Freestyle Discipline Committee Chair and GBS Head Coach.
- G 4.2. If more athletes are proposed than quota places are available, the Freestyle Discipline Committee Chair and GBS Head Coach have discretion to select the athletes most likely to achieve the best result at the Competition.
- G 4.3. The Freestyle Discipline Committee Chair and GBS Head Coach will consider a range of factors when selecting athletes, but will include:
 - G 4.3.1. athletes' FIS ranking in the eligible discipline during the current and preceding season;
 - G 4.3.2. results obtained in Competitions in the eligible discipline during the current season; and
 - G 4.3.3. athletes' Technical Profile and readiness to compete.

Other Major Competitions

FIS Freestyle Junior World Ski Championships

- G 5.1. To be proposed for the FIS Freestyle Junior World Ski Championships, in addition to the eligibility criteria set out in the Policy, an athlete:

- G 5.1.1. must satisfy the FIS Athlete Eligibility; and
- G 5.1.2. must meet or exceed the Minimum Eligibility Criteria set out below.

Minimum Eligibility Criteria

G 5.2. GBS will consider athletes for Selection to the FIS Freestyle Junior World Ski Championships based upon the following criteria:

Men	Women
athletes must be at a trick level performance of a 720 and a 900 with a minimum of two metres of amplitude out of the lip of the pipe and one inverted trick, performed with grabs.	athletes must be at a trick performance of two 540s performed in different directions, with a minimum of one metre of amplitude out of the lip of the pipe, performed with consistent grabs.

G 5.3. If there are more athletes that meet the Eligibility and Selection criteria set out in the Policy than quota places available, the Selection Panel has absolute discretion to select the athletes who in their reasonable opinion are most likely to achieve the best result at the FIS Freestyle Junior World Ski Championships.

G 5.4. The Selection Panel will consider a range of factors when selecting athletes, but will include:

- G 5.4.1. athletes’ FIS ranking in the eligible discipline during the current or preceding season;

- G 5.4.2. results obtained in Competitions in the eligible discipline during the current season; and

- G 5.4.3. athletes’ Technical Profile and readiness to compete.

G 5.5. In extraordinary circumstances, the Selection Panel has absolute discretion to consider (and give additional weight to) any other factors they deem relevant in respect of their nomination decisions including (but not limited to) the likelihood of an athlete being podium competitive in future Olympic Games in accordance with the purpose of the Policy. Any such nominations must be made by a Discipline Head Coach, and must be supported with training and competition data, or technical profiling for consideration by the Selection Panel.

Schedule H: Freestyle - Ski Slopestyle & Big Air Minimum Selection Criteria

Freestyle Ski World Cup Squad (Slopestyle & Big Air)

- H 1.1. To be eligible for consideration for Selection to the GBS Freestyle Ski World Cup Squad (Slopestyle and Big Air), athletes must have proven their technical performance level to be at (or above) the standard described in the table below. On selection to the GBS Freestyle Ski World Cup Squad, athletes will discuss individual performance plans with GBS Freestyle Ski Head Coach to agree how GBS can support athletes throughout the winter season in training and competition.

Men	Women
At least one 1620 and two 1440s, all of a different direction, (i.e. 3 of the 4 directions of spin), with well executed grabs, demonstrated on a World Cup standard Big Air jump or similar.	At least one double (minimum of a double 1080) and two 900s, all of different direction, (i.e. 3 of the 4 directions of spin), with well executed grabs, demonstrated on a World Cup standard Big Air jump or similar.

- H 1.2. Any nomination should be accompanied by a report ratified by either a GBS Freestyle Ski coach or Home Nations coach, but in cases where this is not possible, the GBS Freestyle Ski Head Coach and Selection Panel are able to accept and consider video clips as evidence of an athlete's current regular performance level.
- H 1.3. Tricks submitted must fulfil the below criteria:
- H 1.3.1. Tricks must be ready for judges to award a high score.
 - H 1.3.2. Clips must show multiple examples of the same tricks landed numerous times on different jumps in varying conditions or Events.
 - H 1.3.3. Tricks must display good execution, including grab, trajectory and amplitude, close control, and awareness in most regular attempts.
 - H 1.3.4. Likely to have formed part of a run, in training and in Competition.
 - H 1.3.5. Video angle and quality must clearly show the whole trick including the run in, landing, and ski out.
- H 1.4. Athletes must also demonstrate commitment to both an on and off snow programme as agreed with the GBS Head Coach and GBS Freestyle Ski Coach
- H 1.5. If any athlete wishes to include a written report as well as the contact details of their current coach, that is acceptable.
- H 1.6. Video clips and supporting coaches' reports should be sent to programme@gbsnowsport.com, by 1st May 2024.

- H 1.7. If the Selection Panel select based on video footage, the selected athlete will be awarded "pending" squad status until their technical level can be fully ratified.
- H 1.8. If athletes have been on injury status during the most recent season, this may be considered by the Selection Panel when selecting to Squads.

Freestyle Ski Next Generation Squad (Slopestyle & Big Air) (previously B Squad)

- H 2.1. To be eligible for consideration for Selection to the GBS Freestyle Ski Next Generation Squad (Slopestyle and Big Air), athletes must have proven their technical performance level to be at (or above) the standard described below for their age. Ages used for this purpose shall follow the definitions used in the FIS International Competition Rules (ICR) for the season for which the selection is being made (see SBFSFK ICR 2014.1); for example, for selections relating to the competition season 2023-2024, a person is considered "not yet 15 years old" if their age does not reach 15 by the end of December 2023 (Year of Birth 2009 or later). On selection to the GBS Freestyle Ski Next Generation Squad, athletes will discuss individual performance plans with GBS Freestyle Ski Head Coach to agree how GBS can support athletes throughout the winter season in training and competition.

Men	
Not yet 15 years old	At least one 900 and two 720s all of a different direction, (i.e. 3 of the 4 directions of spin), off axis, with well executed grabs, demonstrated on a World Cup standard Big Air jump or similar.
Not yet 16 years old	At least one 1080 and two 900s all of a different direction, (i.e. 3 of the 4 directions of spin), off axis, with well executed grabs, demonstrated on a World Cup standard Big Air jump or similar.
Not yet 17 years old	At least one 1260 and two 1080s all of a different direction, (i.e. 3 of the 4 directions of spin), off axis, with well executed grabs, demonstrated on a World Cup standard Big Air jump or similar.
Not yet 18 years old	At least one 1440 and two 1260s all of a different direction, (i.e. 3 of the 4 directions of spin), off axis, with well executed grabs, demonstrated on a World Cup standard Big Air jump or similar.
Not yet 19 years old	Should be meeting World Cup Squad level criteria

Women	
Not yet 15 years old	At least one 540 and two 360s all of a different direction, (i.e. 3 of the 4 directions of spin), with well executed grabs, demonstrated on a medium or World Cup standard Big Air jump or similar.
Not yet 16 years old	At least one 720 and two 540s all of a different direction, (i.e. 3 of the 4 directions of spin), with well executed grabs, demonstrated on a World Cup standard Big Air jump or similar.
Not yet 17 years old	At least one 900 and two 720s all of a different direction, (i.e. 3 of the 4 directions of spin), off axis,

	with well executed grabs, demonstrated on a World Cup standard Big Air jump or similar. *there is no criteria for “not yet 18 year old”, given the two year performance progression identified between singles and doubles
Not yet 19 years old	Should be meeting World Cup Squad level criteria

- H 2.2. Any nomination should be accompanied by a report ratified by either a GBS Freestyle Ski coach or Home Nations coach, but in cases where this is not possible, the GBS Freestyle Ski Head Coach and Selection Panel are able to accept and consider video clips as evidence of an athlete's current regular performance level.
- H 2.3. Tricks submitted must fulfil the below criteria:
- H 2.3.1. Tricks must be ready for judges to award a high score.
 - H 2.3.2. Clips must show multiple examples of the same tricks landed numerous times on different jumps in varying conditions or Events.
 - H 2.3.3. Tricks must display good execution, including grab, trajectory and amplitude, close control, and awareness in most regular attempts.
 - H 2.3.4. Likely to have formed part of a run, in training and in Competition.
 - H 2.3.5. Video angle and quality must clearly show the whole trick including the run in, landing, and ski out.
- H 2.4. Athletes must also demonstrate commitment to both an on and off snow programme as agreed with the GBS Head Coach and GBS Freestyle Ski Coach
- H 2.5. If any athlete wishes to include a written report as well as the contact details of their current coach, that is acceptable.
- H 2.6. Video clips and supporting coaches' reports should be sent to programme@gbsnowsport.com, by 1st May 2024.
- H 2.7. If the Selection Panel select based on video footage, the selected athlete will be awarded "pending" squad status until their technical level can be fully ratified.
- H 2.8. If athletes have been on injury status during the most recent season, this may be considered by the Selection Panel when selecting to Squads.
- H 2.9. In extraordinary circumstances, in particular where training opportunities have been impacted e.g. due to injury or education commitments, the Selection Panel has absolute discretion to consider extension of Squad status for one further year if they are satisfied that the athlete remains able to pursue progression to World Cup Squad status and are capable of being podium competitive in future international events, in accordance with the Purpose of the Policy.

Freestyle Ski World Cup Entries (Slopestyle & Big Air)

- H 3.1. Any athlete wishing to be considered for entry to a Ski Slopestyle or Big Air World Cup must meet the FIS minimum World Cup points criteria. The GBS Freestyle Ski Head Coach for the relevant Event shall propose athletes for entry to individual World Cup Competitions, and these shall be ratified by the Freestyle Discipline Committee Chair and GBS Head Coach.
- H 3.2. If more athletes are proposed than quota places are available, the Freestyle Discipline Committee Chair and GBS Head Coach have discretion to select the athletes most likely to achieve the best result at the Competition.
- H 3.3. The Freestyle Discipline Committee Chair and GBS Head Coach will consider a range of factors when selecting athletes, but will include:
 - H 3.3.1. athletes' FIS ranking in the eligible discipline during the current and preceding season;
 - H 3.3.2. results obtained in Competitions in the eligible discipline during the current season; and
 - H 3.3.3. athletes' Technical Profile and readiness to compete.

Freestyle Ski Europa Cup Entries (Slopestyle & Big Air)

- H 4.1. Any athlete wishing to compete in a Ski Slopestyle or Big Air Europa Cup must meet the minimum FIS point criteria as outlined by FIS. The GBS Freestyle Ski Head Coach for the relevant Event shall propose athletes for entry to individual Europa Cup Competitions, and these shall be ratified by the Freestyle Discipline Committee Chair and GBS Head Coach.
- H 4.2. If more athletes are proposed than quota places are available, the Freestyle Discipline Committee Chair and GBS Head Coach have discretion to select the athletes most likely to achieve the best result at the Competition.
- H 4.3. The Freestyle Discipline Committee Chair and GBS Head Coach will consider a range of factors when selecting athletes, but will include:
 - H 4.3.1. athletes' FIS ranking in the eligible discipline during the current and preceding season;
 - H 4.3.2. results obtained in Competitions in the eligible discipline during the current season; and
 - H 4.3.3. athletes' Technical Profile and readiness to compete.

Other Major Competitions

Youth Olympic Games

- H.5.1. In addition to the eligibility criteria set out in the Youth Olympic Games 2024 Selection Policy which can be found on the GBS website, GBS will consider athletes for Selection to the YOG based upon the following criteria:

Men	Women
Athletes must be at a trick performance level of one 1260 with a supporting 1080 of a different direction (i.e., 2 of the 4 directions of spin), executed with grabs on a large kicker.	Athletes must be at a trick performance level of one 720 with a supporting 540 of a different direction (i.e., 2 of the 4 directions of spin), executed with grabs on a large kicker

- H.5.2. If there are more athletes that meet the Eligibility and Selection criteria set out in the Policy than quota places available, the Selection Panel has absolute discretion to select the athletes who in their reasonable opinion are most likely to achieve the best result at the Competition.
- H.5.3. The Selection Panel will consider a range of factors when selecting athletes, but will include:
- H.5.3.1. athletes' FIS ranking in the eligible discipline during the current or preceding season;
 - H.5.3.2. results obtained in Competitions in the eligible discipline during the current season; and
- H.5.4. athletes' Technical Profile and readiness to compete, taking into consideration the competition format of the event e.g., if the competition format requires a spin in both directions, this technical requirement will be considered by the Selection Panel when using technical profiling as a criteria for selection.
- H.5.5. In extraordinary circumstances, the Selection Panel has absolute discretion to consider (and give additional weight to) any other factors they deem relevant in respect of their nomination decisions including (but not limited to) the likelihood of an athlete being podium competitive in future Olympic Games in accordance with the purpose of the Policy. Any such nominations must be made by a Discipline Head Coach, and must be supported with training and competition data, or technical profiling for consideration by the Selection Panel.

FIS Freestyle Junior World Ski Championships

- H.6.1. To be proposed for the FIS Freestyle Junior World Ski Championships, in addition to the eligibility criteria set out in the Policy, an athlete:

H 6.1.1. Must satisfy the FIS Athlete Eligibility; and

H 6.1.2. must meet or exceed the Minimum Eligibility Criteria set out below.

Minimum Eligibility Criteria

H.6.2. GBS will consider athletes for Selection to the FIS Freestyle Junior World Ski Championships based upon the following criteria:

H.6.2.1. A criteria (2005, 2006 and 2007 YOB)

Men	Women
Athletes must be at a trick performance level of one 1260 with a supporting 1080 of a different direction (i.e. 2 of the 4 directions of spin), executed with grabs on a large kicker.	Athletes must be at a trick performance level of one 720 with a supporting 540 of a different direction (i.e. 2 of the 4 directions of spin), executed with grabs on a large kicker

H.6.2.2. B criteria (2008 and 2009 YOB)

Men	Women
Athletes must be at a trick performance level of one 1080 with a supporting 900 of a different direction (i.e. 2 of the 4 directions of spin), executed with grabs on a large kicker.	Athletes must be at a trick performance level of two 540s of a different direction (i.e. 2 of the 4 directions of spin), executed with grabs on a large kicker

H.6.3. If there are more athletes that meet the Eligibility and Selection criteria set out in the Policy than quota places available, the Selection Panel has absolute discretion to select the athletes who in their reasonable opinion are most likely to achieve the best result at the FIS Freestyle Junior World Ski Championships.

H.6.4. The Selection Panel will consider a range of factors when selecting athletes, but will include:

H.6.4.1 athletes' FIS ranking in the eligible discipline during the current or preceding season;

H.6.4.2 results obtained in Competitions in the eligible discipline during the current season; and

H.6.4.3 athletes' Technical Profile and readiness to compete, taking into consideration the competition format of the event

e.g. if the competition format requires a spin in both directions, this technical requirement will be considered by the Selection Panel when using technical profiling as a criteria for selection.

H.6.5 In extraordinary circumstances, the Selection Panel has absolute discretion to consider (and give additional weight to) any other factors they deem relevant in respect of their nomination decisions including (but not limited to) the likelihood of an athlete being podium competitive in future Olympic Games in accordance with the purpose of the Policy. Any such nominations must be made by a Discipline Head Coach, and must be supported with training and competition data, or technical profiling for consideration by the Selection Panel.

Winter FISU World University Games

H.7.1 To be proposed for the Winter FISU World University Games, in addition to the eligibility criteria set out in the Policy, an athlete:

H.7.1.1 must satisfy the BUCS and FISU eligibility criteria and must have satisfied FIS Athlete Eligibility; and

H.7.1.2 must meet or exceed the Minimum Eligibility Criteria set out below:

Minimum Eligibility Criteria

Men	Women
Athletes must be at a consistent trick performance level of two different direction 1080s with grabs executed on a large kicker.	Athletes must be at a consistent trick performance level of two different 540s with grabs executed on a large kicker.

H.7.2 If more athletes are proposed than quota places are available, the Selection Panel has discretion to select the athletes most likely to achieve the best result at the Competition.

H.7.3 The Selection Panel will consider a range of factors when selecting athletes, but will include:

H.7.3.1. athletes' FIS ranking in the eligible discipline during the current or preceding season;

H.7.3.2. results obtained in Competitions in the eligible discipline during the current season; and

H.7.3.3. athletes' Technical profile and readiness to compete.

H.7.4 In extraordinary circumstances, the Selection Panel has absolute discretion to consider (and give additional weight to) any other factors they deem relevant in respect of their nomination decisions including (but not limited to) the likelihood of an athlete being podium competitive in future Olympic Games in accordance with the purpose of the

Policy. Any such nominations must be made by a Discipline Head Coach, and must be supported with training and competition data, or technical profiling for consideration by the Selection Panel.

Schedule I: Nordic - Nordic Combined Minimum Selection Criteria

Nordic Combined World Cup Entries

- I 1.1. Any athlete wishing to be considered for entry to a Nordic Combined World Cup must meet the FIS minimum World Cup points criteria. The Programme Manager shall propose athletes for entry to individual World Cup Competitions, and these shall be ratified by the Nordic Discipline Chair and GBS Head Coach.
- I 1.2. If more athletes are proposed than quota places are available, the Nordic Discipline Committee Chair and GBS Head Coach have discretion to select the athletes most likely to achieve the best result at the Competition.
- I 1.3. The Nordic Discipline Committee Chair and GBS Head Coach will consider a range of factors when selecting athletes, but will include:
 - I 1.3.1. athletes' FIS ranking in the eligible discipline during the current and preceding season;
 - I 1.3.2. results obtained in Competitions in the eligible discipline during the current season.

Nordic Combined Continental Cup Entries

- I 2.1. Any athlete wishing to be considered for entry to a Nordic Combined Continental Cup must meet the FIS minimum Continental Cup points criteria. The Programme Manager shall propose athletes for entry to individual Continental Cup Competitions, and these shall be ratified by the Nordic Discipline Chair and GBS Head Coach.
- I 2.2. If more athletes are proposed than quota places are available, the Nordic Discipline Committee Chair and GBS Head Coach have discretion to select the athletes most likely to achieve the best result at the Competition.
- I 2.3. The Nordic Discipline Committee Chair and GBS Head Coach will consider a range of factors when selecting athletes, but will include:
 - I 2.3.1. athletes' FIS ranking in the eligible discipline during the current or preceding season; and
 - I 2.3.2. results obtained in Competitions in the eligible discipline during the current season.

Youth Olympic Games

Nordic Combined
Individual 6/4km, Mixed Team 4x3.3km
YOB 2006-2008

Minimum Eligibility Criteria

I.3.1. In addition to the eligibility criteria set out in the Youth Olympic Games 2024 Selection Policy which can be found on the GBS website, GBS will consider athletes for Selection to the YOG based upon the following criteria:

I.3.1.1. An athlete must have competed in the below in the current or preceding season:

1 x Top 15 in OPA event OR FIS Youth Cup

I.3.2. The Selection Panel will consider a range of factors when selecting athletes, but will include:

I.3.2.1. Athletes' world ranking in the eligible discipline during the current season;

I.3.2.2. Results obtained in the eligible discipline during the current season; and

I.3.2.3. Results obtained in Competitions during the season generally, with greater emphasis on more recent results in order to select on current form.

FIS Nordic Junior World Ski Championships

I 4.1. Athletes must satisfy the age requirements established by FIS.

I 4.2. Athletes must have achieved the below in the current or preceding season:

1 x Top 10 in OPA event

I 4.3. The Selection Panel will consider a range of factors when selecting athletes, but will include:

I 4.3.1. Athletes' world ranking in the eligible discipline during the current season;

I 4.3.2. results obtained in the eligible discipline during the current season; and

I 4.3.3. results obtained in Competitions during the season generally, with greater emphasis on more recent results in order to select on current form.

I 4.4. In extraordinary circumstances, the Selection Panel has absolute discretion to consider (and give additional weight to) any other factors they deem relevant in respect of their nomination decisions including (but not limited to) the likelihood of an athlete being podium competitive in future Olympic Games in accordance with the purpose of the Policy. Any such nominations must be made by a Discipline Head Coach, and must be supported with training and competition data, or technical profiling for consideration by the Selection Panel.

FIS Nordic U23 World Ski Championships

I 5.1. Athletes must satisfy the age requirements established by FIS.

I 5.2. Athletes must have competed in the below in the current or preceding season:

1 x Top 10 in OPA event

I 5.3. The Selection Panel will consider a range of factors when selecting athletes, but will include:

I 5.3.1. Athletes' world ranking in the eligible discipline during the current season;

I 5.3.2. results obtained in the eligible discipline during the current season; and

I 5.3.3. results obtained in Competitions during the season generally, with greater emphasis on more recent results in order to select on current form.

I 5.4. In extraordinary circumstances, the Selection Panel has absolute discretion to consider (and give additional weight to) any other factors they deem relevant in respect of their nomination decisions including (but not limited to) the likelihood of an athlete being podium competitive in future Olympic Games in accordance with the purpose of the Policy. Any such nominations must be made by a Discipline Head Coach, and must be supported with training and competition data, or technical profiling for consideration by the Selection Panel.

Winter FISU World University Games

I.6.1 To be proposed for Winter FISU World University Games in addition to the eligibility criteria set out in the Policy, an athlete:

I.6.1.1 must meet the BUCS and FISU eligibility criteria and must have satisfied FIS Athlete Eligibility; and

I.6.1.2 meet or exceed the Minimum Eligibility Criteria set out below:

I.6.2 GBS will consider athletes for Selection to the Winter FISU World University Games based upon the following criteria:

1.6.2.1 Athletes must have two results at Continental Cup level or higher; results not gained at Europa Cup competitions shall be subject to additional scrutiny by the Head Coach to assure the Panel of their quality.

I.6.3 If more athletes are proposed than quota places are available, the Selection Panel has discretion to select the athletes most likely to achieve the best result at the Competition.

I.6.4 The Selection Panel will consider a range of factors when selecting athletes, but will include:

I.6.4.1 athletes' FIS ranking in the eligible discipline during the current season; and

I.6.4.2 results obtained in Competitions in the eligible discipline during the current season; and

I.6.4.3 athlete readiness to compete.

Other Major Competitions

I.7.1 For entries for any other Competitions not referenced above, nominations for entries will be made to the Nordic Discipline Committee Chair and GBS Head Coach for ratification.

Schedule J: Nordic - Ski Jumping Minimum Selection Criteria

Ski Jumping World Cup Entries

- J 1.1. Any athlete wishing to be considered for entry to a Ski Jumping World Cup must meet the FIS minimum World Cup points criteria. The Programme Manager shall propose athletes for entry to individual World Cup Competitions, and these shall be ratified by the Nordic Discipline Chair and GBS Head Coach.
- J 1.2 If more athletes are proposed than quota places are available, the Nordic Discipline Committee Chair and GBS Head Coach have discretion to select the athletes most likely to achieve the best result at the Competition.
- J 1.3 The Nordic Discipline Committee Chair and GBS Head Coach will consider a range of factors when selecting athletes, but will include:
 - J 1.3.1 athletes' FIS ranking in the eligible discipline during the current and preceding season; and
 - J 1.3.2 results obtained in Competitions in the eligible discipline during the current season.

Ski Jumping Continental Cup Entries

- J 2.1 Any athlete wishing to be considered for entry to a Ski Jumping Continental Cup must meet the FIS minimum World Cup points criteria. The Programme Manager shall propose athletes for entry to individual Continental Cup Competitions, and these shall be ratified by the Nordic Discipline Chair and GBS Head Coach.
- J 2.2 If more athletes are proposed than quota places are available, the Nordic Discipline Committee Chair and GBS Head Coach have discretion to select the athletes most likely to achieve the best result at the Competition.
- J 2.3 The Nordic Discipline Committee Chair and GBS Head Coach will consider a range of factors when selecting athletes, but will include:
 - J 2.3.1 athletes' FIS ranking in the eligible discipline during the current or preceding season; and
 - J 2.3.2 results obtained in Competitions in the eligible discipline during the current season.

Winter FISU World University Games

- J.3.1 To be proposed for Winter FISU World University Games in addition to the eligibility criteria set out in the Policy, an athlete:
 - J.3.1.1 must meet the BUCS and FISU eligibility criteria and must have satisfied FIS Athlete Eligibility; and

J.3.1.2 meet or exceed the Minimum Eligibility Criteria set out below:

J.3.2 GBS will consider athletes for Selection to the Winter FISU World University Games based upon the following criteria:

Athletes must have two results at Continental Cup level or higher; results not gained at Europa Cup competitions shall be subject to additional scrutiny by the Head Coach to assure the Panel of their quality.

J.3.3 If more athletes are proposed than quota places are available, the Selection Panel has discretion to select the athletes most likely to achieve the best result at the Competition.

J.3.4 The Selection Panel will consider a range of factors when selecting athletes, but will include:

J.3.4.1 athletes' FIS ranking in the eligible discipline during the current season; and

J.3.4.2 results obtained in Competitions in the eligible discipline during the current season; and

J.3.4.3 athlete readiness to compete.

Other Major Competitions

J.4.1 For entries into Major Competitions not mentioned above, nominations for entries will be made to the Nordic Discipline Committee Chair and GBS Head Coach for ratification.

Schedule K: Snowboard – Alpine Snowboard Minimum Selection Criteria

Alpine Snowboard World Cup Entries

- K 1.1. The GBS Ski and Snowboard Cross Head Coach shall nominate athletes for entry to individual World Cup Competitions, and these shall be ratified by the Snowboard Discipline Committee Chair and GBS Head Coach.
- K 1.2. If more athletes are proposed than quota places are available, the Snowboard Discipline Committee Chair and GBS Head Coach have discretion to select the athletes most likely to achieve the best result at the Competition.
- K 1.3. The Snowboard Discipline Committee Chair and GBS Head Coach will consider a range of factors when selecting athletes, but will include:
- K 1.3.1 athletes' FIS ranking in the eligible discipline during the current and preceding season; and
 - K 1.3.2 results obtained in Competitions in the eligible discipline during the current season.

Alpine Snowboard Europa Cup Entries

- K 2.1. The GBS Ski and Snowboard Cross Head Coach shall nominate athletes for entry to individual Europa Cup Competitions, and these shall be ratified by the Snowboard Discipline Committee Chair and GBS Head Coach.
- K 2.2. If more athletes are proposed than quota places are available, the Snowboard Discipline Committee Chair and GBS Head Coach have discretion to select the athletes most likely to achieve the best result at the Competition.
- K 2.3. The Snowboard Discipline Committee Chair and GBS Head Coach will consider a range of factors when selecting athletes, but will include:
- K 2.3.1 athletes' FIS ranking in the eligible discipline during the current or preceding season; and
 - K 2.3.2 results obtained in Competitions in the eligible discipline during the current season.

Other Major Competitions

FIS Freestyle Junior World Snowboard Championships

- K.4.1 To be proposed for the FIS Snowboard Junior World Championships, in addition to the eligibility criteria set out in the Policy, an athlete:

- K.4.1.1 must satisfy the FIS Age and Points Athlete Eligibility; and
- K.4.1.2 must meet or exceed the Minimum Eligibility Criteria set out below.

Minimum Eligibility Criteria

K.4.2 GBS will consider athletes for Selection to the FIS Snowboard Junior World Championships based upon the following criteria:

Men	Women
Achieve a minimum of 20 FIS points.	Achieve a minimum of 20 FIS points.

- K.4.3 If FIS points have been obtained outside of Europa Cups, eligibility for Selection must be approved by the GBS Ski and Snowboard Cross Head Coach.
- K.4.4 If there are more athletes that meet the Eligibility and Selection criteria set out in the Policy than quota places available, the Selection Panel has absolute discretion to select the athletes who in their reasonable opinion are most likely to achieve the best result at the FIS Snowboard Junior World Championships.
- K.4.5 The Selection Panel will consider a range of factors when selecting athletes, but will include:
 - K.4.5.1 FIS ranking against last published FIS point list preceding FIS Snowboard Junior World Championships selection meeting;
 - K.4.5.2 athletes' FIS ranking in the eligible discipline during the current and preceding season; and
 - K.4.5.3 results obtained in competitions in the eligible discipline during the current season.
- K.4.6 In extraordinary circumstances, the Selection Panel has absolute discretion to consider (and give additional weight to) any other factors they deem relevant in respect of their nomination decisions including (but not limited to) the likelihood of an athlete being podium competitive in future Olympic Games in accordance with the purpose of the Policy. Any such nominations must be made by a Discipline Head Coach, and must be supported with training and competition data, or technical profiling for consideration by the Selection Panel.

Winter FISU World University Games

- K.6.1 To be proposed for Winter FISU World University Games in addition to the eligibility criteria set out in the Policy, an athlete:
 - K.6.1.1 must meet the BUCS and FISU eligibility criteria and must have satisfied FIS Athlete Eligibility.

- K.6.1.2. meet or exceed the Minimum Eligibility Criteria set out below:

- K.6.2. GBS will consider athletes for Selection to the Winter FISU World University Games based upon the following criteria:
 - K.6.2.1. Athletes must have two results at Continental Cup level or higher; results not gained at Europa Cup competitions shall be subject to additional scrutiny by the Head Coach to assure the Panel of their quality.

- K.6.3. If more athletes are proposed than quota places are available, the Selection Panel has discretion to select the athletes most likely to achieve the best result at the Competition.

- K.6.4. The Selection Panel will consider a range of factors when selecting athletes, but will include:
 - K.6.4.1. athletes' FIS ranking in the eligible discipline during the current season; and
 - K.6.4.2. results obtained in Competitions in the eligible discipline during the current season; and
 - K.6.4.3. athlete readiness to compete.

Other Major Competitions

- K 6.5. For entries for any other Competitions not referenced above, nominations for entries will be made to the Snowboard Discipline Committee Chair and GBS Head Coach for ratification.

Schedule L: Snowboard – Snowboard Cross Minimum Selection Criteria

Snowboard Cross World Cup Squad

- L 1.1. GBS will consider athletes for Selection to the GB Snowboard Cross World Cup Squad based upon the following criteria:

Men	Women
Athletes must have achieved a minimum of two Top 32 finishes in Snowboard Cross World Cup during the current season.	Athletes must have achieved a minimum of two Top 16 finishes in Snowboard Cross World Cup during the current season.

- L 1.2. The Panel has discretion to consider the depth and quality of the competitive field in events where results are obtained. Athletes must also meet the criteria listed below at L.1.3 and L.1.4.
- L 1.3. Athletes must be able to perform the following skills in their chosen discipline as assessed by the GBS Snowboard Cross Head Coach:
- L 1.3.1. Consistently land a straight jump of 15-20m (for both Men and Women)
 - L 1.3.2. Produce an amplitude of 1m (Men) or 50cm (Women) in a half pipe run;
 - L 1.3.3. Complete a giant slalom course using edges;
 - L 1.3.4. Switch ride with good edging; and
 - L 1.3.5. Experience of producing competitive gate starts.
- L 1.4. Athletes must also demonstrate:
- L 1.4.1. Commitment to a dry land training programme agreed with the GBS Snowboard Cross Head Coach; and
 - L 1.4.2. Commitment to a full preseason training schedule (mid-June start), as agreed with GBS Snowboard Cross Head Coach, including a minimum of three GBS summer training camps.
- L 1.5. If athletes have been on injury status during the most recent season, this may be considered by the Selection Panel when selecting to Squads.

Snowboard Cross Europa Cup Squad

- L 2.1. GBS will consider athletes for Selection to the GB Snowboard Cross Europa Squad based upon the following criteria:

Men	Women
50 FIS Points	50 FIS Points

- L 2.2. The Panel has discretion to consider the depth and quality of the competitive field in events where results are obtained. Athletes must also meet the criteria listed below from L.2.3 to L.2.5.
- L 2.3. Athletes must be able to perform the following skills in their chosen discipline as assessed by the GBS Snowboard Cross Head Coach:
- L 2.3.1. Consistently land subsequent straight jumps of 10m (Men) or 8m (Women), with a good speed management between features;
 - L 2.3.2. Produce a half-pipe run reaching the top of the coping;
 - L 2.3.3. Experience in a giant slalom course using edges;
 - L 2.3.4. Switch ride with good edging; and
 - L 2.3.5. Experience of producing competitive gate starts.
- L 2.4. Athletes must have competed in a minimum of 2 Europa Cups in the previous season.
- L 2.5. Athletes must also demonstrate:
- L 2.5.1. Commitment to a dry land training programme agreed with the GBS Snowboard Cross Head Coach; and
 - L 2.5.2. Commitment to at least two GBS EC training camps or equivalent external non-GBS programme as agreed with the GBS Snowboard Cross Head Coach and Head Cross Coach.
- L 2.6. Selection proposals will be made following publication of the first FIS point list. A further review will take place in December in line with the release of the second FIS point quotas. Athletes may be selected to either the World Cup or Europa Cup Squads if they meet all the relevant criteria.
- L 2.7. If athletes have been on injury status during the most recent season, this may be considered by the Selection Panel when selecting to Squads.

Snowboard Cross World Cup Entries

- L 3.1. Any athlete wishing to be considered for entry to a World Cup must meet the minimum FIS points criteria required to enter a World Cup as outlined by FIS. The GBS Snowboard Cross Head Coach or Programme Manager shall nominate athletes for entry to individual World Cup Competitions, and these shall be ratified by the Snowboard Discipline Committee Chair and GBS Head Coach.

- L 3.2. If more athletes are proposed than quota places are available, the Snowboard Discipline Committee Chair and GBS Head Coach have discretion to select the athletes most likely to achieve the best result at the Competition.
- L 3.3. The Snowboard Discipline Committee Chair and GBS Head Coach will consider a range of factors when selecting athletes, but will include:
 - L 3.3.1. athletes' FIS ranking in the eligible discipline during the current and preceding season; and
 - L 3.3.2. results obtained in Competitions in the eligible discipline during the current season.

Snowboard Cross Europa Cup Entries

- L 4.1. Any athlete wishing to compete in a Europa Cup must meet the minimum FIS point criteria to enter a Europa Cup as outlined by FIS. The GBS Snowboard Cross Head Coach or Programme Manager shall nominate athletes for entry to individual World Cup Competitions, and these shall be ratified by the Snowboard Discipline Committee Chair and GBS Head Coach.
- L 4.2. If more athletes are proposed than quota places are available, the Snowboard Discipline Committee Chair and GBS Head Coach have discretion to select the athletes most likely to achieve the best result at the Competition.
- L 4.3. The Snowboard Discipline Committee Chair and GBS Head Coach will consider a range of factors when selecting athletes, but will include:
 - L 4.3.1. athletes' FIS ranking in the eligible discipline during the current or preceding season; and
 - L 4.3.2. results obtained in Competitions in the eligible discipline during the current season.

Other Major Competitions

Youth Olympic Games

Individual, Mixed Team
YOB 2006-2008
Minimum Eligibility Criteria

- L.5.1 In addition to the eligibility criteria set out in the Youth Olympic Games 2024 Selection Policy which can be found on the GBS website, GBS will consider athletes for Selection to the YOG based upon the following criteria:

A Criteria (2005 YOB)
Achieved top 67% in Snowboard Cross Junior World Championships in preceding season
OR

2 x top 50% at Snowboard Cross FIS Events in the current or preceding season (at least one must come from the current season)
B Criteria (2006 YOB)
Competed in 2 x Snowboard Cross FIS Events AND Achieved top 50% in one Snowboard Cross FIS event in the current or preceding season

- L 5.1.1 The Panel has discretion to consider the depth and quality of the competitive field in events where results are obtained
- L 5.1.2 Athletes must also have attended one GBS training camp in order for GBS coaches to validate performance level is as required for YOG.
- L.5.3 If there are more athletes that meet the Eligibility and Selection criteria set out in the Policy than quota places available, the Selection Panel has absolute discretion to select the athletes who in their reasonable opinion are most likely to achieve the best result at the competition.
- L.5.5 The Selection Panel will consider a range of factors when selecting athletes, but will include:
 - L.5.5.1 athletes' FIS ranking in the eligible discipline during the current season;
 - L.5.5.2 results obtained in Competitions in the eligible discipline during the current season; and
 - L.5.5.3 athlete readiness to compete.
- L.5.6 In extraordinary circumstances, the Selection Panel has absolute discretion to consider (and give additional weight to) any other factors they deem relevant in respect of their nomination decisions including (but not limited to) the likelihood of an athlete being podium competitive in future Olympic Games in accordance with the purpose of the Policy. Any such nominations must be made by a Discipline Head Coach, and must be supported with training and competition data, or technical profiling for consideration by the Selection Panel.

FIS Freestyle Junior World Snowboard Championships

- L.6.1 To be proposed for the FIS Snowboard Junior World Championships, in addition to the eligibility criteria set out in the Policy, an athlete:
 - L 6.1.1 must satisfy the FIS Age and Points Athlete Eligibility; and
 - L 6.1.2 must meet or exceed the Minimum Eligibility Criteria set out below.

Minimum Eligibility Criteria

- L.6.2 GBS will consider athletes for Selection to the FIS Snowboard Junior World Championships based upon the following criteria:

Men	Women
Achieve a minimum of 40 FIS points.	Achieve a minimum of 40 FIS points.

- L.6.3 If FIS points have been obtained outside of Europa Cups, eligibility for Selection must be approved by the GBS Snowboard Cross Head Coach. The Panel has discretion to consider the depth and quality of the competitive field in events where results are obtained.
- L.6.4 If there are more athletes that meet the Eligibility and Selection criteria set out in the Policy than quota places available, the Selection Panel has absolute discretion to select the athletes who in their reasonable opinion are most likely to achieve the best result at the FIS Snowboard Junior World Championships.
- L.6.5 The Selection Panel will consider a range of factors when selecting athletes, but will include:
- L.6.5.1 FIS ranking against last published FIS point list preceding FIS Snowboard Junior World Championships selection meeting;
 - L.6.5.2 athletes' FIS ranking in the eligible discipline during the current and preceding season; and
 - L.6.5.3 results obtained in competitions in the eligible discipline during the current season.
- L.6.6 In extraordinary circumstances, the Selection Panel has absolute discretion to consider (and give additional weight to) any other factors they deem relevant in respect of their nomination decisions including (but not limited to) the likelihood of an athlete being podium competitive in future Olympic Games in accordance with the purpose of the Policy. Any such nominations must be made by a Discipline Head Coach, and must be supported with training and competition data, or technical profiling for consideration by the Selection Panel.

Winter FISU World University Games

- L.7.1 To be proposed for Winter FISU World University Games in addition to the eligibility criteria set out in the Policy, an athlete:
- L.7.1.1 must meet the BUCS and FISU eligibility criteria and must have satisfied FIS Athlete Eligibility; and
 - L.7.1.2 meet or exceed the Minimum Eligibility Criteria set out below:

- L.7.2 GBS will consider athletes for Selection to the Winter FISU World University Games based upon the following criteria:
- L.7.2.1 Athletes must have two results at Continental Cup level or higher; results not gained at Europa Cup competitions shall be subject to additional scrutiny by the Head Coach to assure the Panel of their quality.
- L.7.3 If more athletes are proposed than quota places are available, the Selection Panel has discretion to select the athletes most likely to achieve the best result at the Competition.
- L.7.4 The Selection Panel will consider a range of factors when selecting athletes, but will include:
- L.7.4.1 athletes' FIS ranking in the eligible discipline during the current season; and
 - L.7.4.2 results obtained in Competitions in the eligible discipline during the current season; and
 - L.7.4.3 athlete readiness to compete.
- L.7.5 In extraordinary circumstances, the Selection Panel has absolute discretion to consider (and give additional weight to) any other factors they deem relevant in respect of their nomination decisions including (but not limited to) the likelihood of an athlete being podium competitive in future Olympic Games in accordance with the purpose of the Policy. Any such nominations must be made by a Discipline Head Coach, and must be supported with training and competition data, or technical profiling for consideration by the Selection Panel.

Schedule M: Snowboard - Halfpipe Minimum Selection Criteria

Freestyle Snowboard World Cup Squad (Halfpipe) (previously A Squad)

- M 1.1. Selection for Freestyle Snowboard World Cup Squad (Halfpipe) will be made on a case-by-case application basis. For further details, email programme@gbsnowsport.com. Each case will be considered in relation to current world class performance levels.

Freestyle Snowboard Europa Cup Squad (Halfpipe) (previously B Squad)

- M 2.1. Selection for Freestyle Snowboard Europa Cup Squad (Halfpipe) will be made on a case-by-case application basis. For further details, email programme@gbsnowsport.com. Each case will be considered in relation to current world class performance levels.

Freestyle Snowboard Halfpipe World Cup Entries

- M 3.1. Any athlete wishing to be considered for entry to a Snowboard Halfpipe World Cup must meet the FIS minimum World Cup points criteria. The GBS Freestyle Snowboard Head Coach shall propose athletes for entry to individual World Cup Competitions, and these shall be ratified by the Snowboard Discipline Committee Chair and GBS Head Coach.
- M 3.2. If more athletes are proposed than quota places are available, the Snowboard Discipline Committee Chair and GBS Head Coach have discretion to select the athletes most likely to achieve the best result at the Competition.
- M 3.3. The Snowboard Discipline Committee Chair and GBS Head Coach will consider a range of factors when selecting athletes, but will include:
- M 3.3.1. athletes' FIS ranking in the eligible discipline during the current and preceding season;
 - M 3.3.2. results obtained in Competitions in the eligible discipline during the current season; and
 - M 3.3.3. athletes' Technical Profile and readiness to compete, taking into consideration the competition format of the event
e.g. if the competition format requires a spin in both directions, this technical requirement will be considered by the Selection Panel when using technical profiling as a criteria for selection.

Freestyle Snowboard Halfpipe Europa Cup Entries

- M 4.1. Any athlete wishing to compete in a Snowboard Halfpipe Europa Cup must meet the minimum FIS point criteria as outlined by FIS. The GBS Freestyle Snowboard Head Coach for the relevant Event shall propose athletes for entry to individual Europa Cup Competitions, and these shall be ratified by the Snowboard Discipline Committee Chair

and GBS Head Coach.

- M 4.2. If more athletes are proposed than quota places are available, the Snowboard Discipline Committee Chair and GBS Head Coach have discretion to select the athletes most likely to achieve the best result at the Competition.
- M 4.3. The Snowboard Discipline Committee Chair and GBS Head Coach will consider a range of factors when selecting athletes, but will include:
- M 4.3.1. athletes' FIS ranking in the eligible discipline during the current and preceding season;
 - M 4.3.2. results obtained in Competitions in the eligible discipline during the current season; and
 - M 4.3.3. athletes' Technical Profile and readiness to compete, taking into consideration the competition format of the event
e.g. if the competition format requires a spin in both directions, this technical requirement will be considered by the Selection Panel when using technical profiling as a criteria for selection.

Other Major Competitions

Youth Olympic Games

Snowboard Halfpipe
YOB 2006-2009
Minimum Eligibility Criteria

- M 4.4. In addition to the eligibility criteria set out in the Youth Olympic Games 2024 Selection Policy which can be found on the GBS website, GBS will consider athletes for Selection to the YOG based upon the following criteria:

Men	Women
Athletes must be at technical performance level of one 1260 or 1080 followed by any other 1080 or 900, executed with grabs, to a minimum of 2m amplitude.	Athletes must be at technical performance level of one 900 or 720 followed by any other 720 or 540, executed with grab, to a minimum of 2m amplitude.

- M 4.5. If there are more athletes that meet the Eligibility and Selection criteria set out in the Policy than quota places available, the Selection Panel has absolute discretion to select the athletes who in their reasonable opinion are most likely to achieve the best result at the competition.

M 4.6. The Selection Panel will consider a range of factors when selecting athletes, but will include:

M 4.6.1. Athletes' world ranking in the eligible discipline during the current season;

M 4.6.2. results obtained in the eligible discipline during the current season;

M 4.6.3. results obtained in Competitions during the season generally, with greater emphasis on more recent results in order to select on current form; and

M 4.6.4. athletes' Technical Profile and readiness to compete, taking into consideration the competition format of the event e.g., if the competition format requires a spin in both directions, this technical requirement will be considered by the Selection Panel when using technical profiling as a criteria for selection.

M 4.7. In extraordinary circumstances, the Selection Panel has absolute discretion to consider (and give additional weight to) any other factors they deem relevant in respect of their nomination decisions including (but not limited to) the likelihood of an athlete being podium competitive in future.

FIS Freestyle Junior World Snowboard Championships

M.5.1 Selection for FIS Freestyle Junior World Snowboard Championships will be made on a case-by-case application basis. For further details, email programme@gbsnowsport.com. Each case will be considered in relation to current world class performance levels.

Schedule N: Snowboard - Slopestyle & Big Air Minimum Selection Criteria

Freestyle Snowboard World Cup Squad (Slopestyle & Big Air)

- N 1.1. To be eligible for consideration for Selection to the GBS Park and Pipe Snowboard World Cup Squad, athletes must have proven their technical performance level to be at (or above) the standard described below. On selection to the GBS Freestyle Snowboard World Cup Squad, athletes will discuss individual performance plans with GBS Freestyle Snowboard Head Coach to agree how GBS can support athletes throughout the winter season in training and competition.

Men	Women
At least one 1440 and a supporting 1260 if a different direction, (i.e., 2 of the 4 directions of spin), with well executed grabs, demonstrated on a World Cup standard Big Air jump or similar.	At least one 720 and a supporting 540 in a different direction, (i.e., 2 of the 4 directions of spin), with well executed grabs, demonstrated on a World Cup standard Big Air jump or similar.

- N 1.2. Any nomination should be accompanied by a report ratified by either a GBS Freestyle Snowboard or Home Nations coach, but in cases where this is not possible, the GBS Freestyle Snowboard Head Coach and Selection Panel are able to accept and consider video clips as evidence of an athlete's current regular performance level.
- N 1.3. Tricks submitted must fulfil the below criteria:
- N 1.3.1. Tricks must be ready for judges to award a high score.
 - N 1.3.2. Clips must show multiple examples of the same tricks landed numerous times on different jumps in varying conditions or Events.
 - N 1.3.3. Tricks must display good execution, including grab, trajectory and amplitude, close control, and awareness in most regular attempts.
 - N 1.3.4. Likely to have formed part of a run, in training and in Competition.
 - N 1.3.5. Video angle and quality must clearly show the whole trick including the run in, landing, and ride out.
- N 1.4. If any athlete wishes to include a written report as well as the contact details of their current coach, that is acceptable.
- N 1.5. Video clips and supporting coaches' reports should be sent to programme@gbsnowsport.com, by 1st May 2024.

- N 1.6. If the Selection Panel select based on video footage, the selected athlete will be awarded "pending" team status until their technical level can be fully ratified.
- N 1.7. If athletes have been on injury status during the most recent season, this may be considered by the Selection Panel when selecting to Squads.

Freestyle Snowboard Next Generation Squad (Slopestyle & Big Air) (previously B Squad)

- N 2.1. To be eligible for consideration for Selection to the GBS Freestyle Snowboard Next Generation Squad, athletes must have proven their technical performance level to be at (or above) the standard described below. On selection to the GBS Freestyle Snowboard Next Generation Squad, athletes will discuss individual performance plans with GBS Freestyle Snowboard Head Coach to agree how GBS can support athletes throughout the winter season in training and competition.

Men	Women
Athletes who have not yet turned 18 years of age must have proven a technical performance level of at least one 900, as well as 'at least' one other 720, differing in directions of spin,(i.e., 2 of the 4 directions of spin), with well executed grabs, demonstrated on a World Cup Big Air jump or similar.	Athletes who have not yet turned 18 years of age must have proven a technical performance level of at least one 360, executed on a World Cup standard Big Air jump or similar.

- N 2.2. Any nomination should be accompanied by a report ratified by either a GBS Freestyle Snowboard coach or Home Nations coach, but in cases where this is not possible, the GBS Freestyle Snowboard Head Coach and Selection Panel are able to accept and consider video clips as evidence of an athlete's current regular performance level.
- N 2.3. Tricks submitted must fulfil the below criteria:
 - N 2.3.1. Tricks must be ready for judges to award a high score.
 - N 2.3.2. Clips must show multiple examples of the same tricks landed numerous times on different jumps in varying conditions or Events.
 - N 2.3.3. Tricks must display good execution, including grab, trajectory and amplitude, close control, and awareness in most regular attempts.
 - N 2.3.4. Likely to have formed part of a run, in training and in Competition.
 - N 2.3.5. Video angle and quality must clearly show the whole trick including the run in, landing, and ride out.
- N 2.4. If any athlete wishes to include a written report as well as the contact details of their current coach, that is acceptable.

- N 2.5. Video clips and supporting coaches' reports should be sent to programme@gbsnowsport.com, by 1st May 2024.
- N 2.6. If the Selection Panel select based on video footage, the selected athlete will be awarded "pending" team status until their technical level can be fully ratified.
- N 2.7. If athletes have been on injury status during the most recent season, this may be considered by the Selection Panel when selecting to Squads.

Freestyle Snowboard World Cup Entries (Slopestyle & Big Air)

- N 3.1. Any athlete wishing to be considered for entry to a Snowboard Slopestyle or Big Air World Cup must meet the FIS minimum World Cup points criteria. The GBS Freestyle Snowboard Head Coach shall propose athletes for entry to individual World Cup Competitions, and these shall be ratified by the Snowboard Discipline Committee Chair and GBS Head Coach.
- N 3.2. If more athletes are proposed than quota places are available, the Snowboard Discipline Committee Chair and GBS Head Coach have discretion to select the athletes most likely to achieve the best result at the Competition.
- N 3.3. The Snowboard Discipline Committee Chair and GBS Head Coach will consider a range of factors when selecting athletes, but will include:
 - N 3.3.1. athletes' FIS ranking in the eligible discipline during the current and preceding season;
 - N 3.3.2. results obtained in Competitions in the eligible discipline during the current season; and
 - N 3.3.3. athletes' Technical Profile and readiness to compete, taking into consideration the competition format of the event
e.g. if the competition format requires a spin in both directions, this technical requirement will be considered by the Selection Panel when using the technical profiling as a criteria of selection

Freestyle Snowboard Slopestyle & Big Air Europa Cup Entries

- N 4.1. Any athlete wishing to compete in a Snowboard Slopestyle or Big Air Europa Cup must meet the minimum FIS point criteria as outlined by FIS. The GBS Freestyle Snowboard Head Coach for the relevant Event shall propose athletes for entry to individual Europa Cup Competitions, and these shall be ratified by the Snowboard Discipline Committee Chair and GBS Head Coach.
- N 4.2. If more athletes are proposed than quota places are available, the Snowboard Discipline Committee Chair and GBS Head Coach have discretion to select the athletes most likely to achieve the best result at the Competition.
- N 4.3. The Snowboard Discipline Committee Chair and GBS Head Coach will consider a range of factors when selecting athletes, but will include:

- N 4.3.1. athletes' FIS ranking in the eligible discipline during the current and preceding season;
- N 4.3.2. results obtained in Competitions in the eligible discipline during the current season; and
- N 4.3.3. athletes' Technical Profile and readiness to compete, taking into consideration the competition format of the event
e.g. if the competition format requires a spin in both directions, this technical requirement will be considered by the Selection Panel when using technical profiling as a criteria for selection.

Other Major Competitions

Youth Olympic Games

Slopestyle & Big Air
YOB 2006-2009
Minimum Eligibility Criteria

- N 5.1. In addition to the eligibility criteria set out in the Youth Olympic Games 2024 Selection Policy which can be found on the GBS website, GBS will consider athletes for Selection to the YOG based upon the following criteria:

Men	Women
Athletes must be at a trick performance level of one 1080 with supporting 900 of opposite direction, executed with grabs on a large kicker.	Athletes must be at a trick performance level of two 540s performed in different directions, executed with grabs on a large kicker.

- N 5.2. If there are more athletes that meet the Eligibility and Selection criteria set out in the Policy than quota places available, the Selection Panel has absolute discretion to select the athletes who in their reasonable opinion are most likely to achieve the best result at the competition.
- N 5.3. The Selection Panel will consider a range of factors when selecting athletes, but will include:
- N 5.3.1. Athletes' world ranking in the eligible discipline during the current season;
 - N 5.3.2. results obtained in the eligible discipline during the current season; and
 - N 5.3.3. results obtained in Competitions during the season generally, with greater emphasis on more recent results in order to select on current form.
 - N 5.3.4. athletes' Technical Profile and readiness to compete, taking into consideration the competition format of the event e.g., if the competition format requires a

spin in both directions, this technical requirement will be considered by the Selection Panel when using technical profiling as a criteria for selection.

- N 5.4. In extraordinary circumstances, the Selection Panel has absolute discretion to consider (and give additional weight to) any other factors they deem relevant in respect of their nomination decisions including (but not limited to) the likelihood of an athlete being podium competitive in future Olympic Games in accordance with the purpose of the Policy. Any such nominations must be made by a Discipline Head Coach, and must be supported with training and competition data, or technical profiling for consideration by the Selection Panel.

FIS Freestyle Junior World Snowboard Championships

- N 6.1. To be proposed for the FIS Freestyle Junior World Snowboard Championships, in addition to the eligibility criteria set out in the Policy, an athlete:

N 6.1.1. must satisfy the FIS Athlete Eligibility; and

N 6.1.2. must meet or exceed the Minimum Eligibility Criteria set out below.

- N 6.2. GBS will consider athletes for Selection to the FIS Freestyle World Snowboard Championships based upon the following criteria:

Minimum Eligibility Criteria

Men	Women
Athletes must be at a trick performance level of two 1080 of a different direction (i.e. clockwise, anticlockwise) executed with grabs on a large kicker.	Athletes must be at a trick performance level of one 720 and one 540 performed in different directions executed with grabs on a large kicker.

- N 6.3. If there are more athletes that meet the Eligibility and Selection criteria set out in the Policy than quota places available, the Selection Panel has absolute discretion to select the athletes who in their reasonable opinion are most likely to achieve the best result at the FIS Freestyle Junior World Snowboard Championships

- N 6.4. The Selection Panel will consider a range of factors when selecting athletes, but will include:

N 6.4.1. athletes' FIS ranking in the eligible discipline during the current or preceding season;

N 6.4.2. results obtained in Competitions in the eligible discipline during the current season; and

N 6.4.3. athletes' Technical Profile and readiness to compete, taking into consideration the competition format of the event

e.g. if the competition format requires a spin in both directions, this technical requirement will be considered by the Selection Panel when using technical profiling as a criteria for selection.

- N 6.5. In extraordinary circumstances, the Selection Panel has absolute discretion to consider (and give additional weight to) any other factors they deem relevant in respect of their nomination decisions including (but not limited to) the likelihood of an athlete being podium competitive in future Olympic Games in accordance with the purpose of the Policy. Any such nominations must be made by a Discipline Head Coach, and must be supported with training and competition data, or technical profiling for consideration by the Selection Panel.

Winter FISU World University Games

- N.7.1 To be proposed for the Winter FISU World University Games, in addition to the eligibility criteria set out in the Policy, an athlete:

N.8.1.1 must satisfy the FIS and IOC Athlete Eligibility; and

N.8.1.2 must meet or exceed the Minimum Eligibility Criteria set out below.

Minimum Eligibility Criteria

- N.7.2 GBS will consider athletes for Selection to the Winter FISU World University Games based upon the following criteria:

Men	Women
Athletes must be at a consistent trick performance level of two different direction 1080s with grabs executed on a large kicker.	Athletes must be at a consistent trick performance level of two different 540s with grabs executed on a large kicker.

- N.7.3 If more athletes are proposed than quota places are available, the Selection Panel has discretion to select the athletes most likely to achieve the best result at the Competition.

- N.7.4 If more athletes are proposed than quota places are available, the Selection Panel has discretion to select the athletes most likely to achieve the best result at the Competition.

- N.7.5 The Selection Panel will consider a range of factors when selecting athletes, but will include:

N.7.5.1 athletes' FIS ranking in the eligible discipline during the current or preceding season;

N.7.5.2 results obtained in Competitions in the eligible discipline during the current season; and

- N.7.5.3 athletes Technical Profile and readiness to compete, taking into consideration the competition format of the event
e.g. if the competition format requires a spin in both directions, this technical requirement will be considered by the Selection Panel when using technical profiling as a criteria for selection.
- N.7.6 In extraordinary circumstances, the Selection Panel has absolute discretion to consider (and give additional weight to) any other factors they deem relevant in respect of their nomination decisions including (but not limited to) the likelihood of an athlete being podium competitive in future Olympic Games in accordance with the purpose of the Policy. Any such nominations must be made by a Discipline Head Coach, and must be supported with training and competition data, or technical profiling for consideration by the Selection Panel.

Schedule O: Speed Ski Minimum Selection Criteria

Speed Ski World Cup Events

- O 1.1. Athletes who wish to enter Speed Ski World Cup Events must request entry via the Speed Ski Discipline Chair. The Speed Ski Discipline Chair will ask for references or an assessment. The GBS Head Coach shall ratify the entry requests following the Speed Ski Discipline Chair's written recommendation.

Other Speed Ski Events

- O 2.1. Athletes who wish to enter other major Speed Ski Events must request entry via the Speed Ski Discipline Chair. The Speed Ski Discipline Chair will ask for references or an assessment. The GBS Head Coach shall ratify the entry requests following the Speed Ski Discipline Chair's written recommendation.

Schedule P: Telemark Minimum Selection Criteria

Telemark World Cup Squad

- P 1.1. Athletes must be within 10% (gender specific) in one of the race disciplines (excluding Championship GS) of a top 20 ranked World Cup Skier (Men) and top 8 (Women).
- P 1.2. Athletes must be available for most of the World Cup season (based upon consistency).
- P 1.3. Athletes must show clear progression and improvement throughout the year (E.g. improving FIS or National Cup points and/or significant technical improvement).

Telemark FIS Squad

- P 2.1. Athletes who are capable of representing Great Britain at a World Cup level.
- P 2.2. Largely differentiated from World Cup Squad by level of investment.
 - P 2.2.1. Measured throughout both summer and winter and evaluated in the Selection meetings.
- P 2.3. Includes athletes who qualify for World Cup Squad in terms of ability but are either unable to attend World Cups due to external commitments or show inadequate levels of commitment.

Telemark Development Squad

- P 3.1. A watch list of talent identified by the GBS Telemark Selection Committee (GBS TSC).

Assessment

- P 4.1. Athletes in World Cup Teams and FIS Teams must undertake a Physical Assessment twice a year to measure progression.
- P 4.2. All athletes must undertake a Technical Skills Assessment.
- P 4.3. A Technical Skills Assessment must show a minimum of the following:
 - P 4.3.1. correct Telemark technique and transition;
 - P 4.3.2. smooth jump technique and correct Telemark landing; and
 - P 4.3.3. skating with XC poles.

Major Championships

P 5.1. Criteria in the table below must be met at the time of Selection meeting:

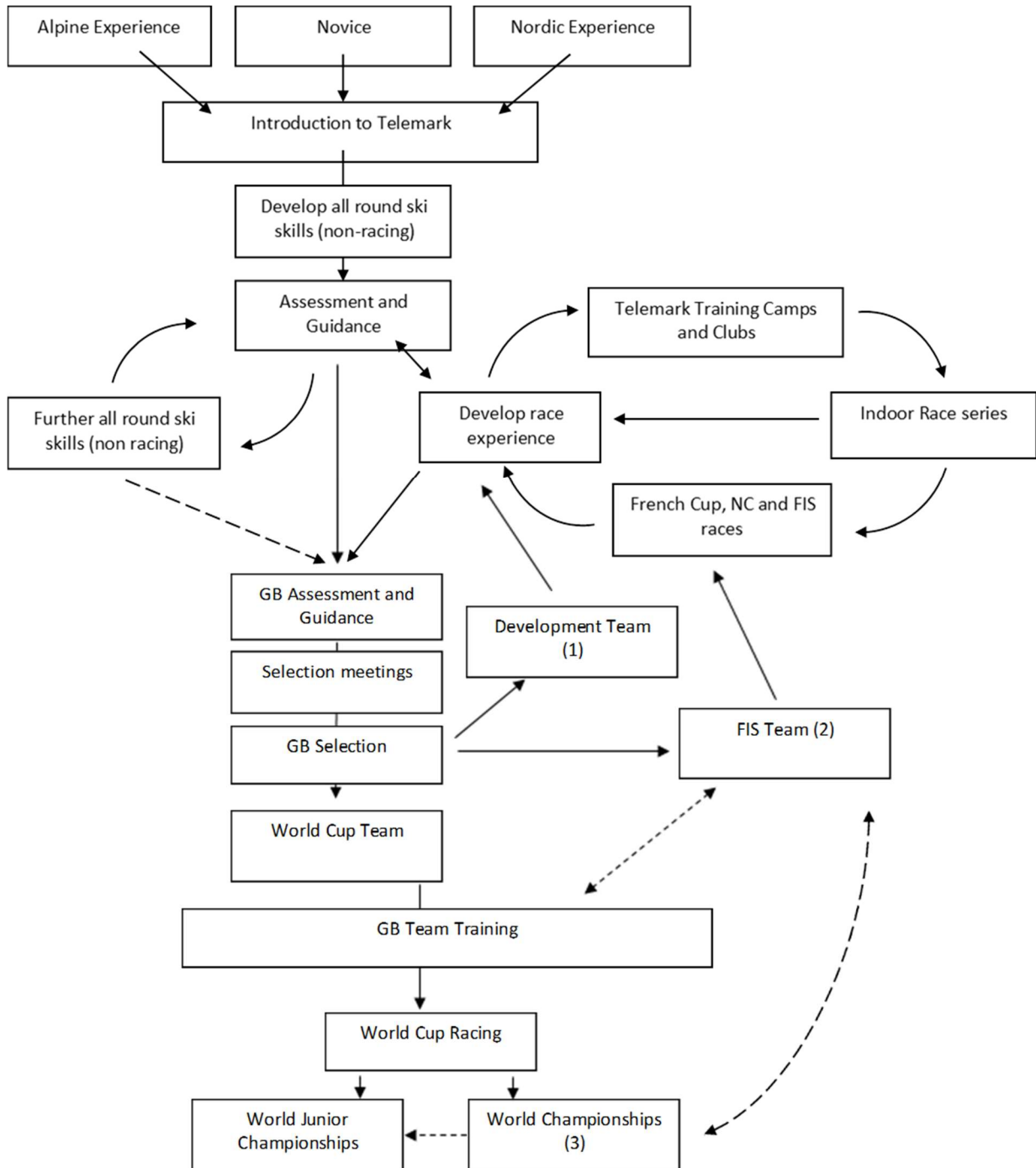
World Cup	<ul style="list-style-type: none">- Selection to World Cup Team.- FIS Team if supported by the coach and GBS TSC.
Junior World Championships*1	<ul style="list-style-type: none">- Recommendation by GBS TSC.
Senior/Junior World Championships*1	<ul style="list-style-type: none">- Automatically qualified if a member of the World Cup Team.- FIS Team if supported by the coach and GBS TSC.

P 5.2. *1 Athletes that meet the Selection Criteria in one Telemark discipline may compete in other disciplines if recommended by the appropriate coaching staff representing GBS at that event, providing that they meet the eligibility criteria stated by FIS.

P 5.3. The GBS TSC will consider all eligible athletes 60 days prior to the start of the Championships (athletes must hold an active FIS Telemark licence to be eligible).

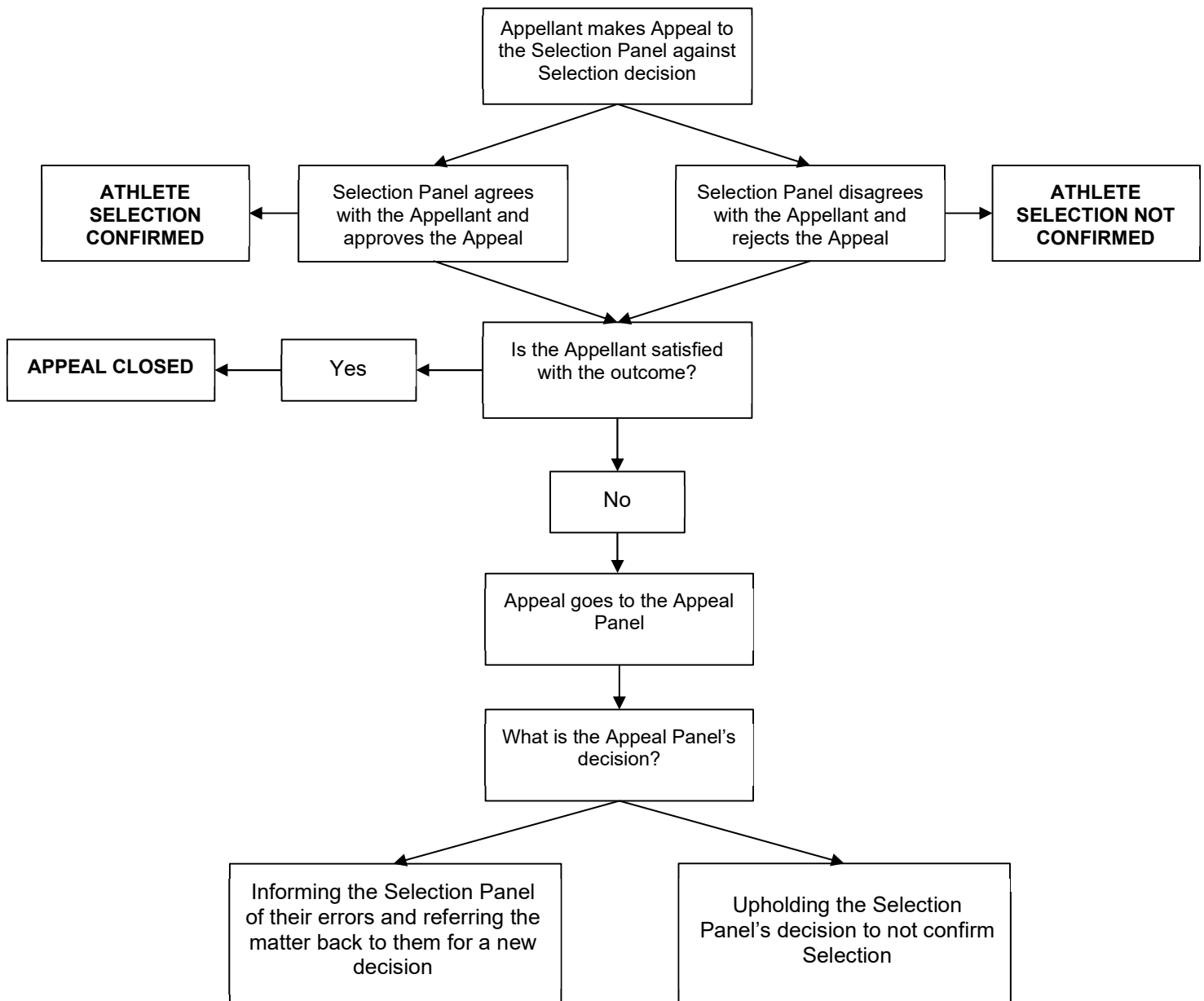
P 5.4. The GBS TSC will consider athletes who have not been selected for the Championships team yet meet the Selection criteria during the 60 days between the team announcement and the start of the Championships. Additional Selections to the team may be made on that basis by the GBS TSC to provide for exceptional results after the Selections have been announced, quota places allowing.

Telemark Development Pathway



- (1) Development Squad may be invited to train with WC Squad and FIS Squad by the GBS TSC if appropriate.
- (2) FIS Squad should train with WC Squad and are expected to participate in NC and FIS races, thus a FIS licence is mandated.
- (3) FIS Squad may participate at a WC or WJC/WSC at discretion of the Coach and GBS TSC if their participation is beneficial and likely to credit the team; noting that there are currently no quota limitations and the field is usually larger at WSC.

Schedule Q: Appeals Process Flowchart



*The Appeal Panel may only reverse the Selection Panel's decision if the athlete's health and/or safety was not one of the reasons for the original decision.

Owner:	Board of GB Snowsport
Version number:	1.0
Date last modified:	29 th September 2023
Modified by:	Maddy Hunter
Authorised Date:	3 rd October 2023
Authorising authority:	Board of GB Snowsport
Authorisation information:	Approved at GBS Board 3 rd October 2023
File location:	GB Snowsport